



Coomandook Salinity Update

Technology Update

Felicity Turner

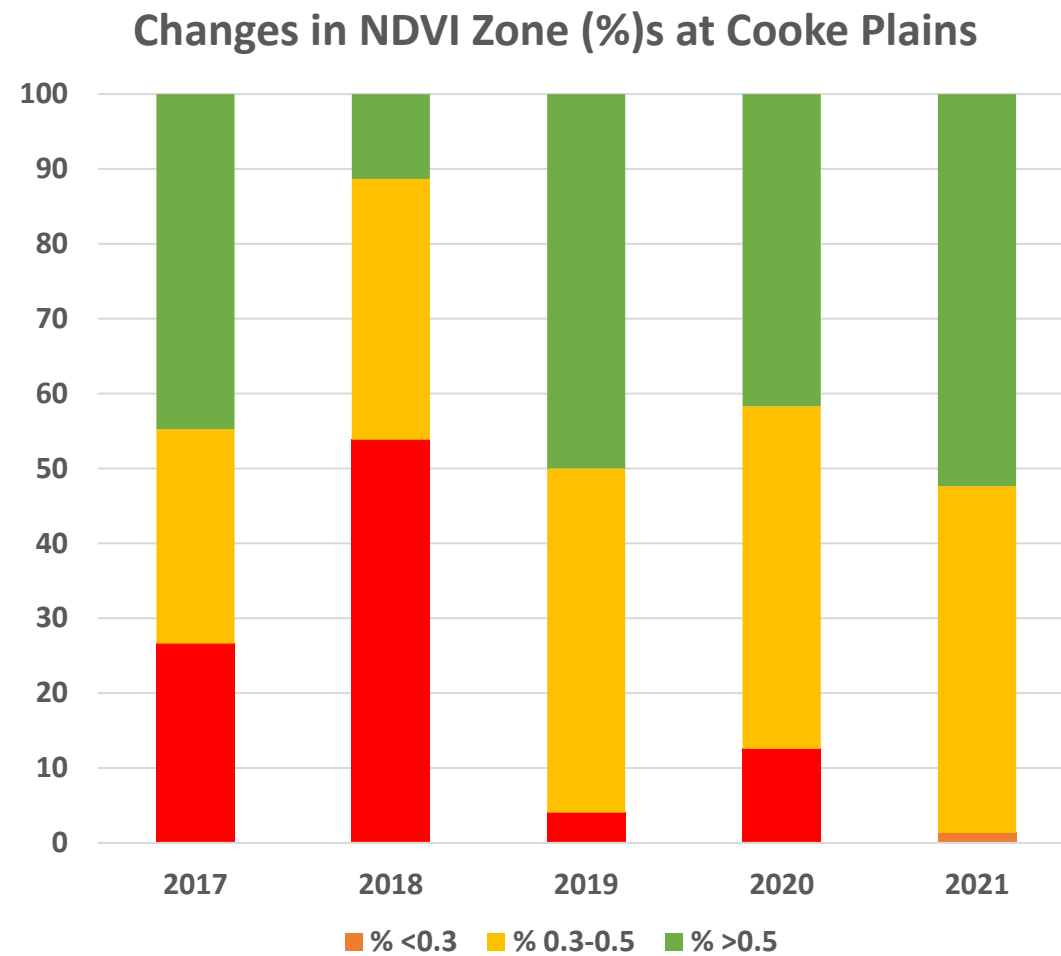
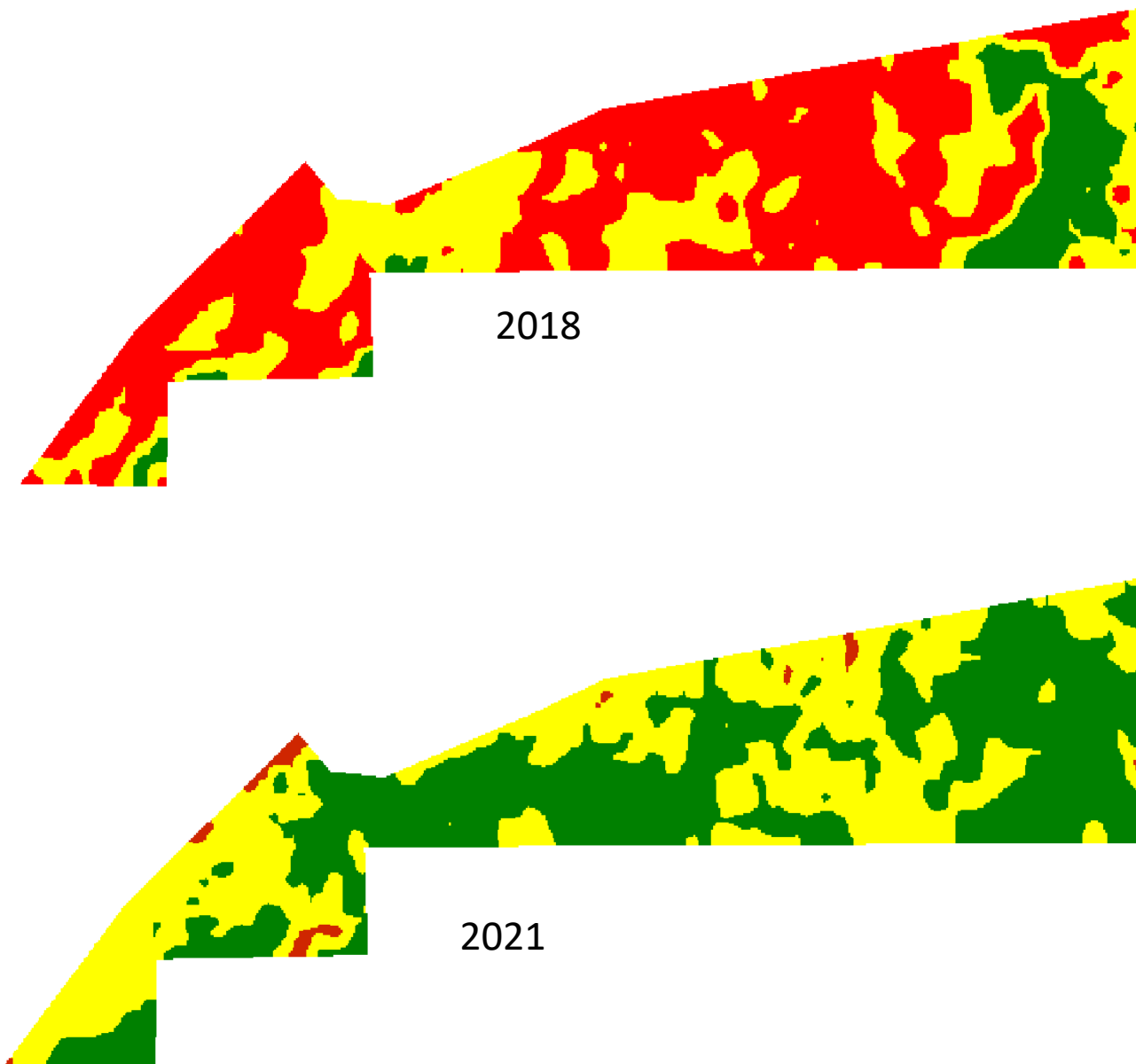
What's been achieved



2017



2021



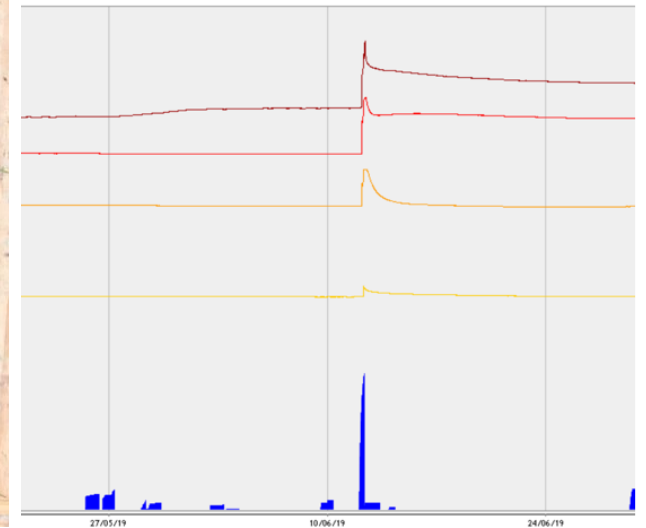
Key Messages



**Maintain
groundcover at all
costs**



Diversity



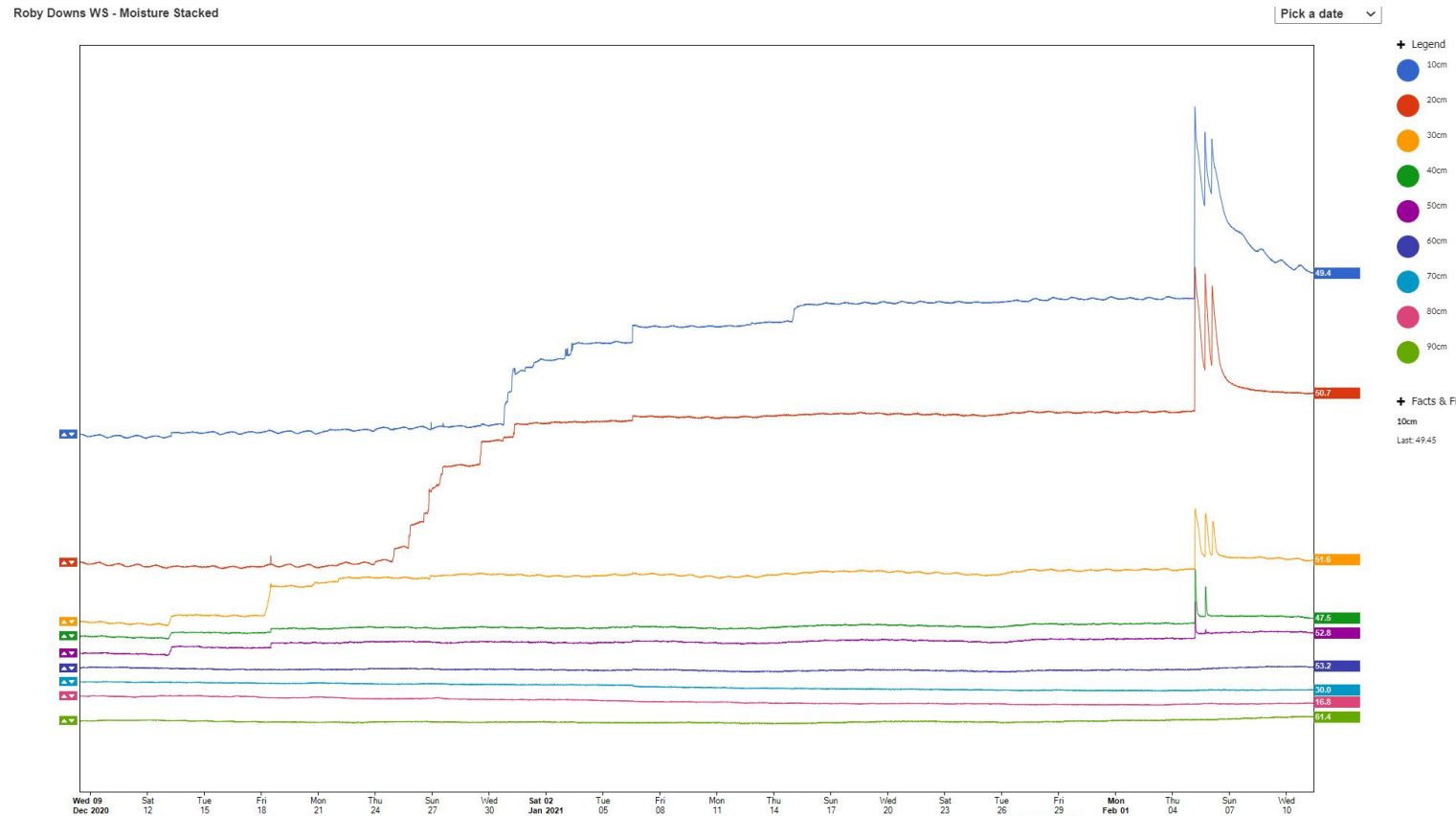
Flush effect

Know your soil salinity levels

Prevention better than cure

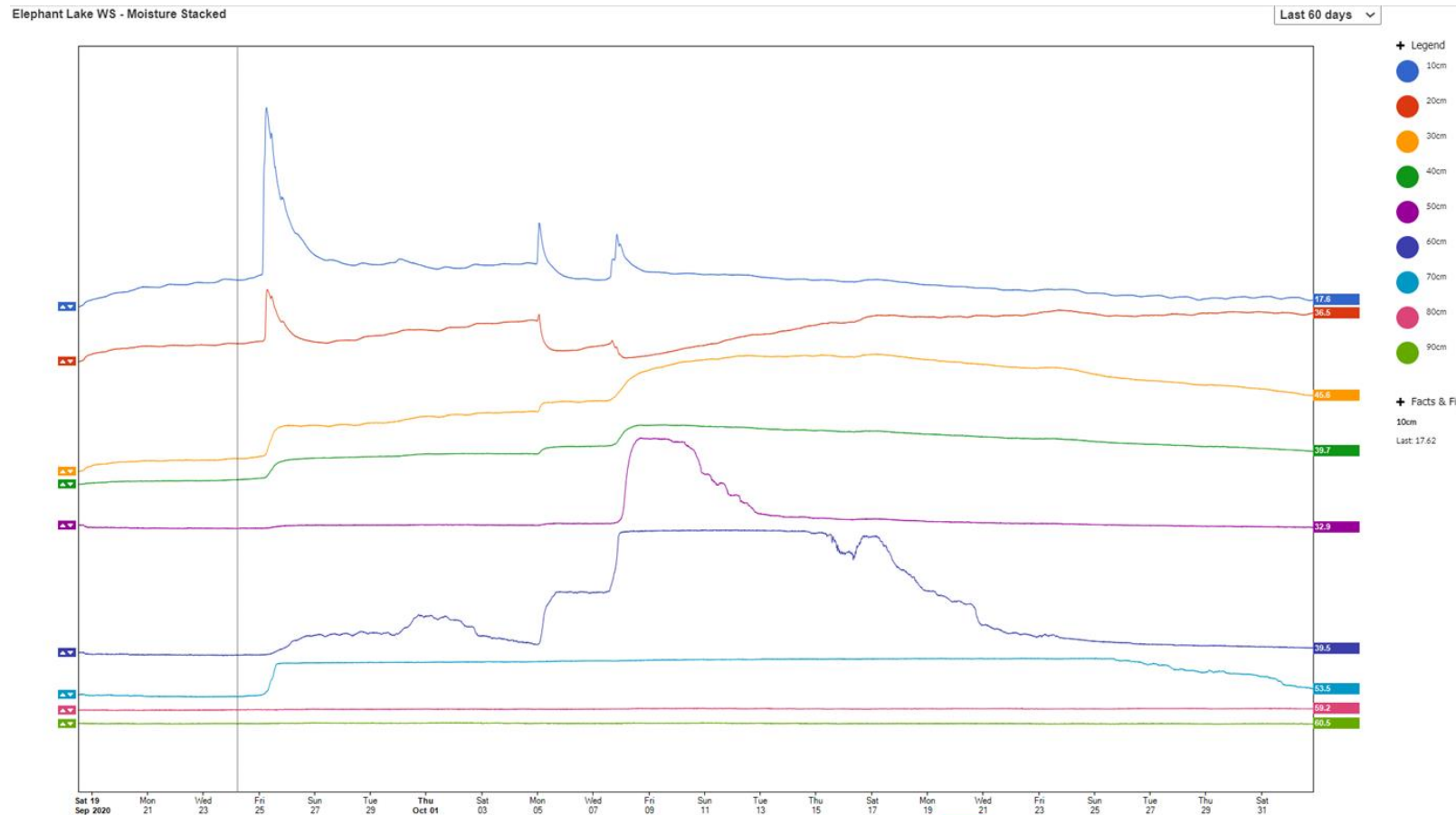
Automation & Technology – how has it helped?

- Science behind observations – wicking front



Automation & Technology – how has it helped?

- Science behind observations – water table rise




Next steps

- Going from individual sites to across the landscape
 - Looking ‘higher up’ in the landscape “upstream”
 - Do water tables move
 - Independently of each other (localised – on farm)
 - One after the other (local catchment)
 - Impact of local rainfall events
 - Can we get drawdown of the water table at a farm level?

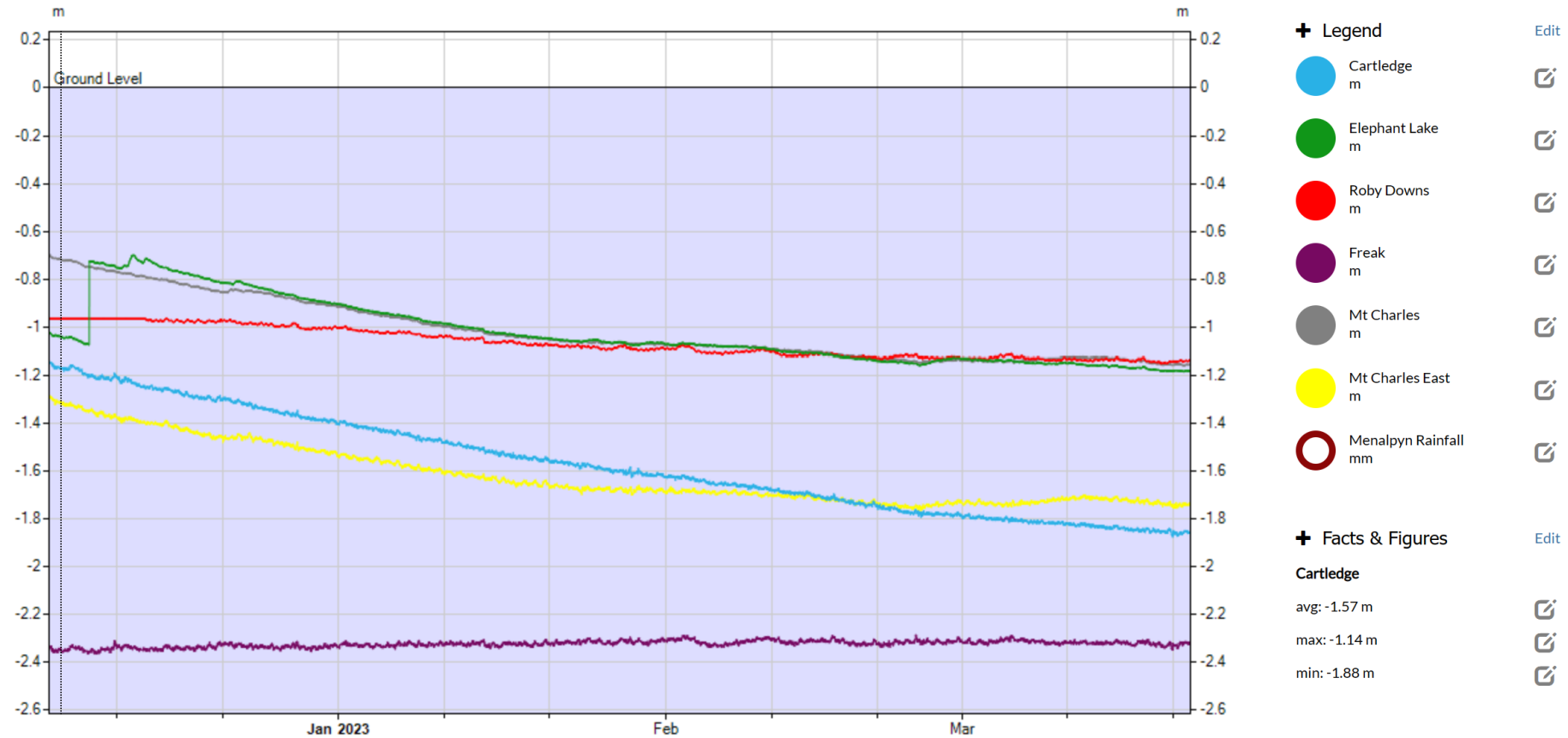
All water table depths online end of December

Turner,F Water Table - Depth to Water

 Last 90 days

Save

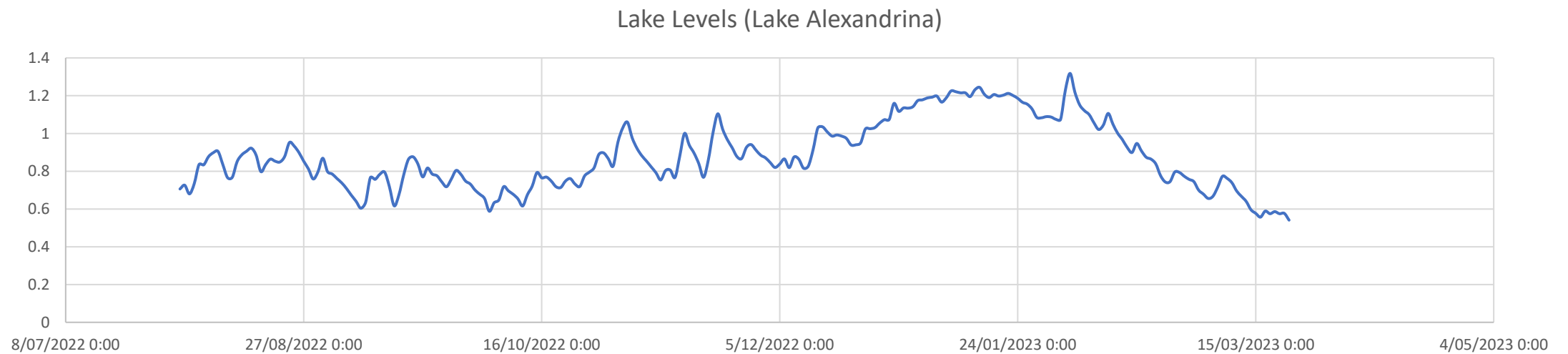
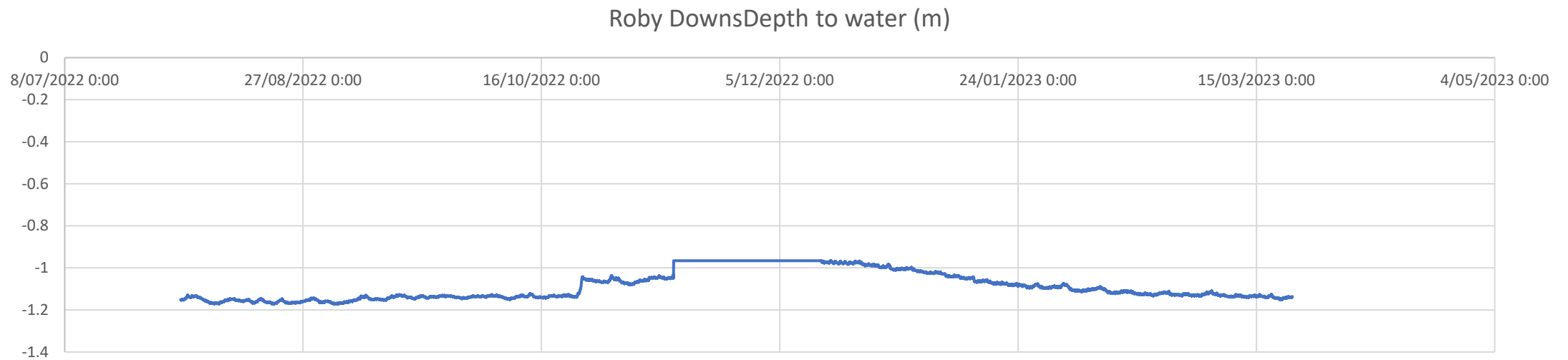
Close



What have we observed so far...

- [https://app.outpostcentral.com/remote/\(S\(d41xn2ap03verja3dycc2qyx\)\)/WildeyeEDefault.aspx?uguid=348384d7-a19c-ed11-b4db-bc764e180205](https://app.outpostcentral.com/remote/(S(d41xn2ap03verja3dycc2qyx))/WildeyeEDefault.aspx?uguid=348384d7-a19c-ed11-b4db-bc764e180205)

Impact of lake levels



Impact on management decisions

- Roby Downs
 - Water 10cm closer to the surface but soil moisture relatively stable
 - Salts appear to have stabilised
 - Try and draw down as much as we can this year
- Elephant Lake
 - Salinity levels concentrated at the surface (similar to last year)
 - Higher soil moisture compared to last year at 30cms and below – capacity to flush initially may be reduced