



What we have
learnt about
tackling wind
erosion

Sand Stabilisation, Machinery and Clay

- **The Coorong Tatiara LAP** has been working on wind erosion funded projects since 2009.
- Is wind erosion an issue on your place?
- Have you had any successes or failures tackling it?

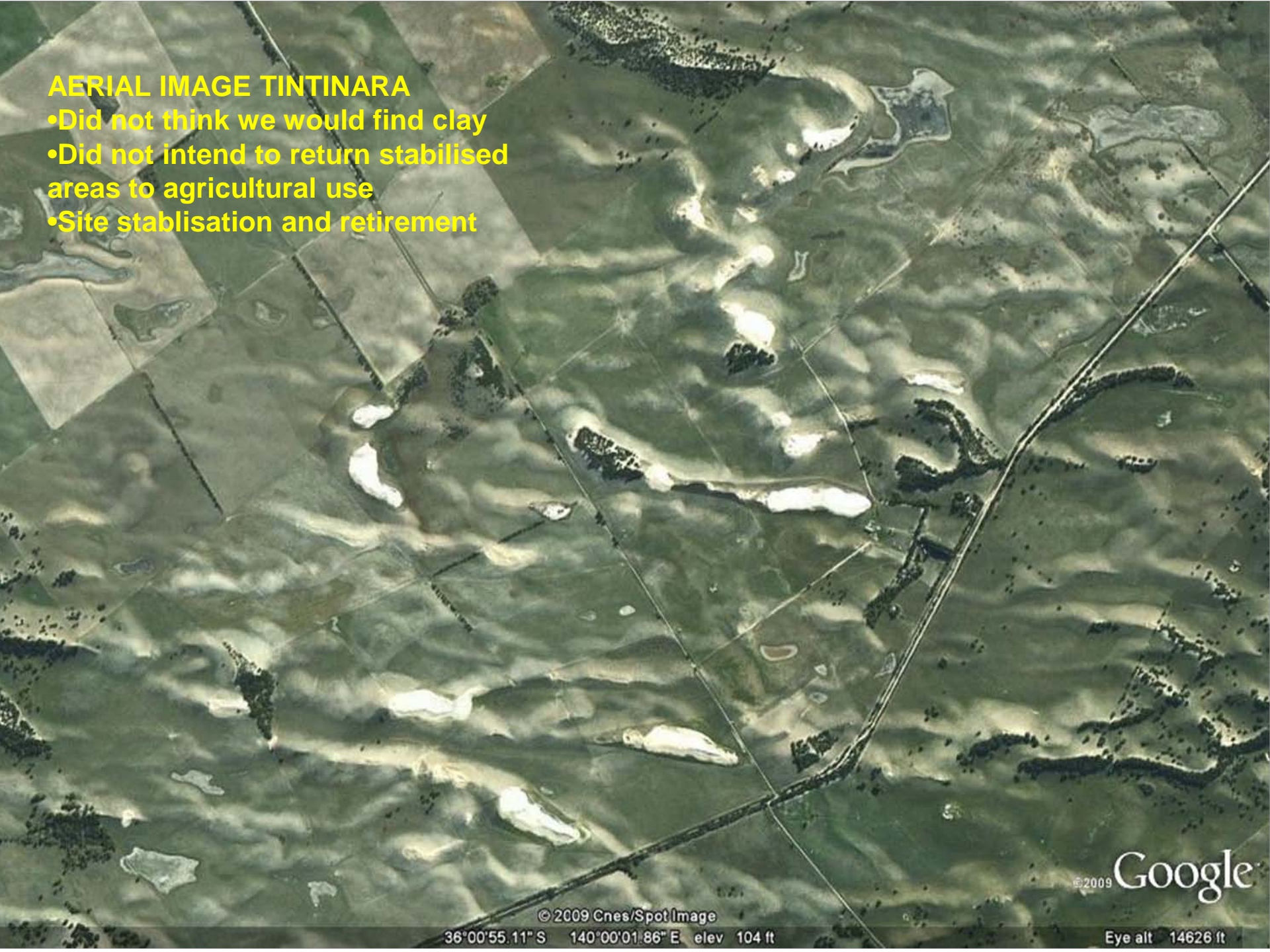


What we have learnt working on challenging sites

- A pure clay is not always required to stabilise the site. Will a rubble with a low clay content do the job
- What are the options when there is no clay
- Machinery
- The end land use after stabilisation will vary. The aim may not be to return the site to production. Be realistic!
- Clay finding

AERIAL IMAGE TINTINARA

- Did not think we would find clay
- Did not intend to return stabilised areas to agricultural use
- Site stabilisation and retirement



BEFORE **APRIL—MAY 2011**

AFTER **SEPTEMBER 2012**





**'CLAY'
RUBBLE**



**SALTY WET
CLAY**

Coomandook Ag Bureau Projects

Soil Description:

<i>Depth (cm)</i>	<i>Description</i>
0-10	Dark greyish brown loose loamy sand. Abrupt to:
10-25	Yellowish brown soft sand. Abrupt to:
25-33	Yellowish red hard massive sandy clay. Sharp to:
33-60	Nodular calcrete. Gradual to:
60-100	Brownish yellow hard massive very highly calcareous sandy clay with more than 50% carbonate nodules (60-200 mm). Diffuse to:
100-130	Pale yellow massive very highly calcareous sandy clay with more than 50% carbonate nodules (60-200 mm).
130-	Water table, with salinity of 12,000 mg/l.



Classification: Bleached-Sodic, Lithocalcic, Red Chromosol; medium, non-gravelly, sandy / clayey, moderate

Where there is no 'clay'.....

What else can be used to break up the wind energy?

How does the freight cost compare to freighting clay in?

Will there be any weed seed issues?

KILN DUST



GRAPE MARC



MANURE



MULCH

SPRAY ON MULCH



What else?

- Hay and Straw**
- Old wool and dags**
- Fallen trees....**





Sandhill Stabilisation, Coombe

Sandhill Stabilisation, Coombe



Sandhill Stabilisation, Coombe Using Waste Grain





Sandhill Stabilisation, Coombe



Sandhill Stabilisation, Coombe

THE MACHINES

Where clay is below the surface....Delver >



Mouldboard Plough >
Being used on some non
wetting sands trial sites
VERY RISKY



< Spader – to incorporate
clay brought to the surface



THE MACHINES





Severe Wind erosion at Jabuk



Severe Wind erosion at Jabuk





Severe Wind erosion at Jabuk





Jabuk after 18 months

INNOVATIONS



END LAND USES

Cropping

Grazing

Retirement

Revegetation

Fodder Shrubs



Blowout at Wirrega



Levelling at Wirrega



Clay spread at Wirrega



Revegetation





Fodder Shrubs

CLAY FINDING

- EM38
- Clay at depth
- Reading the landscape
- Broad definition of clay



<http://www.coorong.sa.gov.au/ongroundworks>

Changes to tax deductions and depreciations
may provide an opportunity
to fund land class fencing