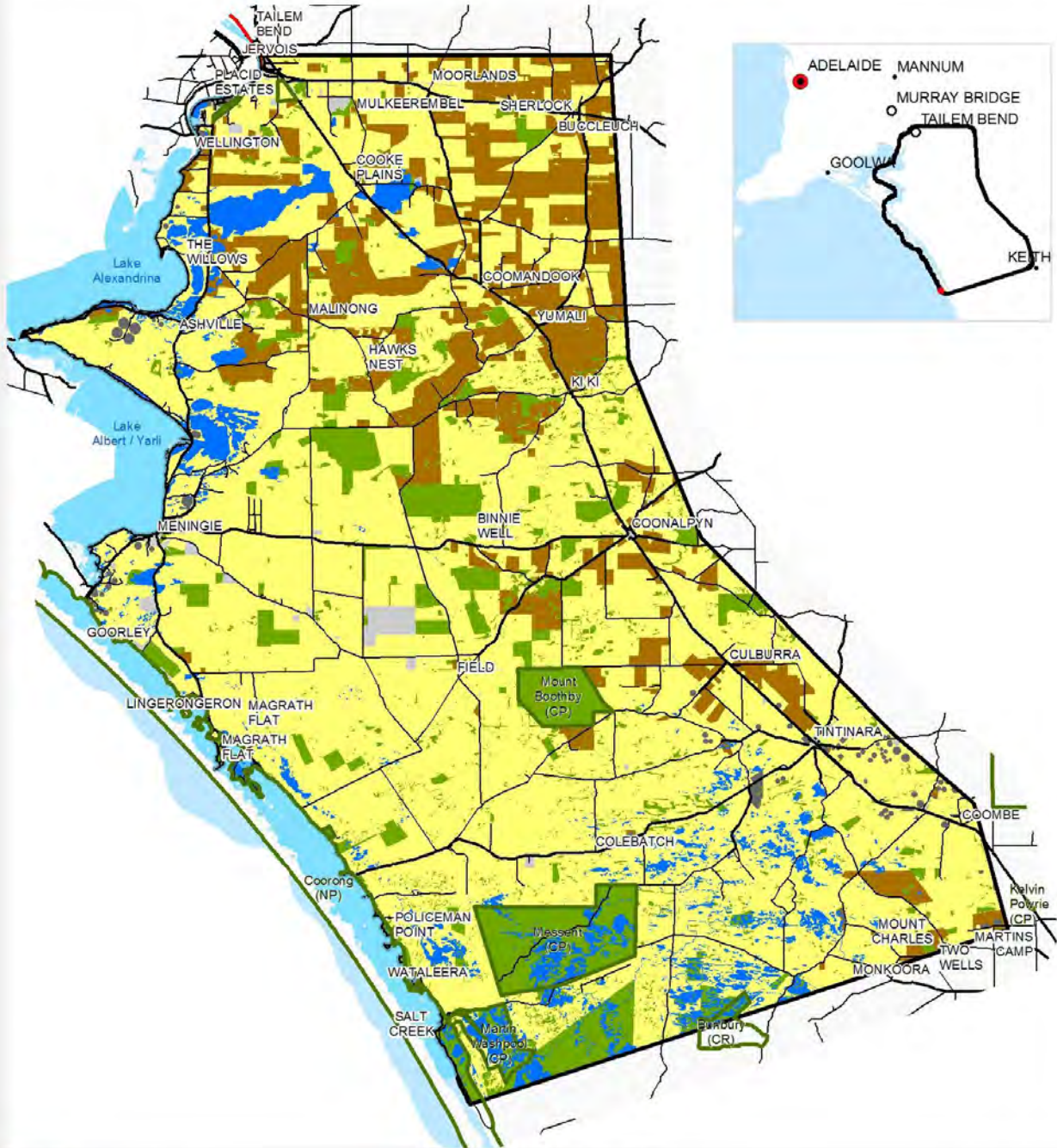


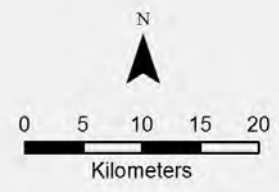
Land Use Change Maps and supporting data

Data provided by Natural Resources SA Murray-Darling Basin

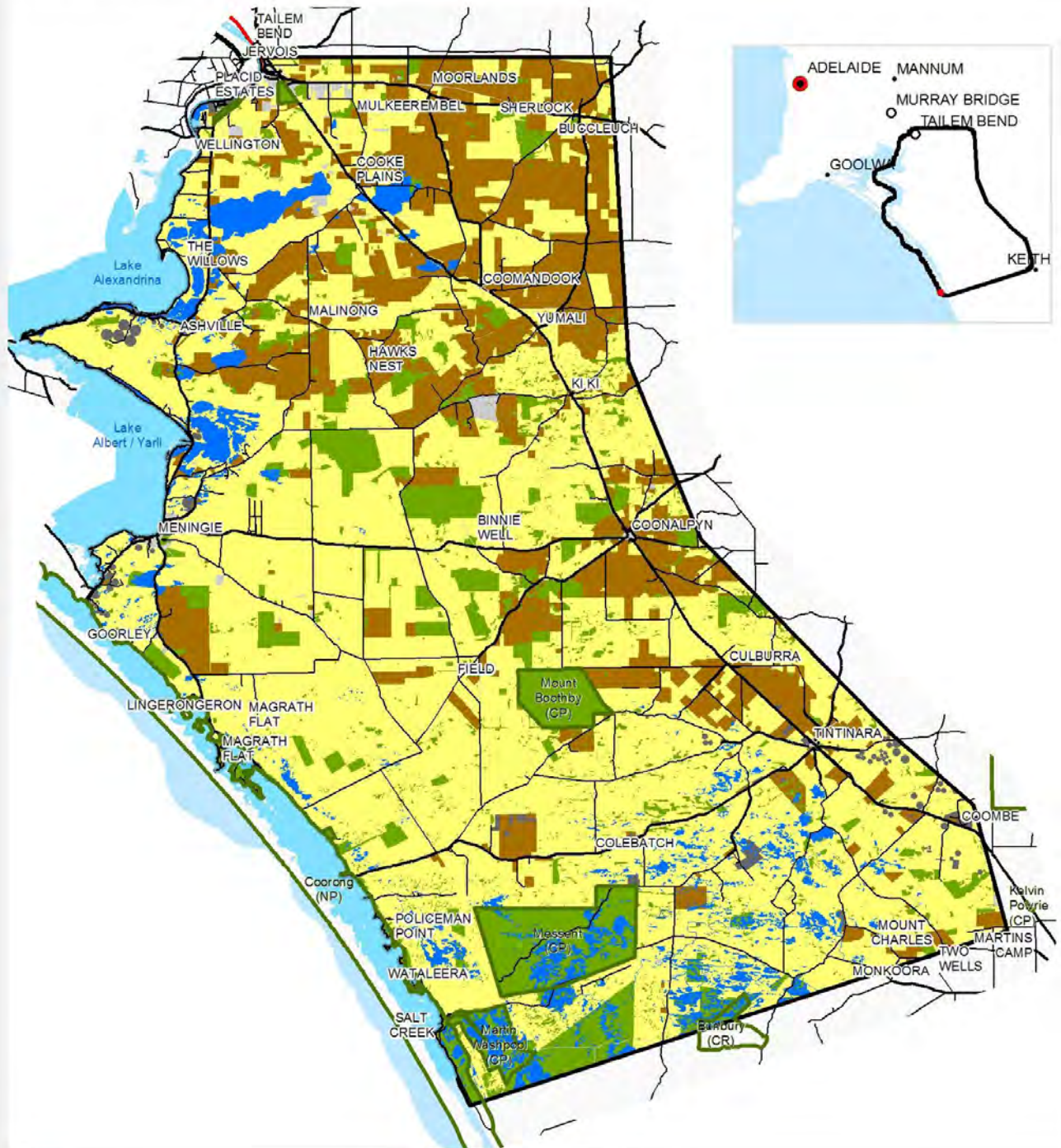
Land Use 2003



- | | |
|--|-------------------|
| Class | Npwsa Reserves |
| Cropping | Area Of Interest |
| Grazing | Highway (divided) |
| Irrigated modified pasture | Sealed |
| Marsh/wetland | Unsealed |
| Conservation and Natural Resources | |
| Unclassified/Not Part of project scope | |

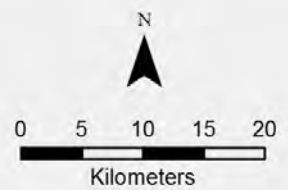


Land Use 2008

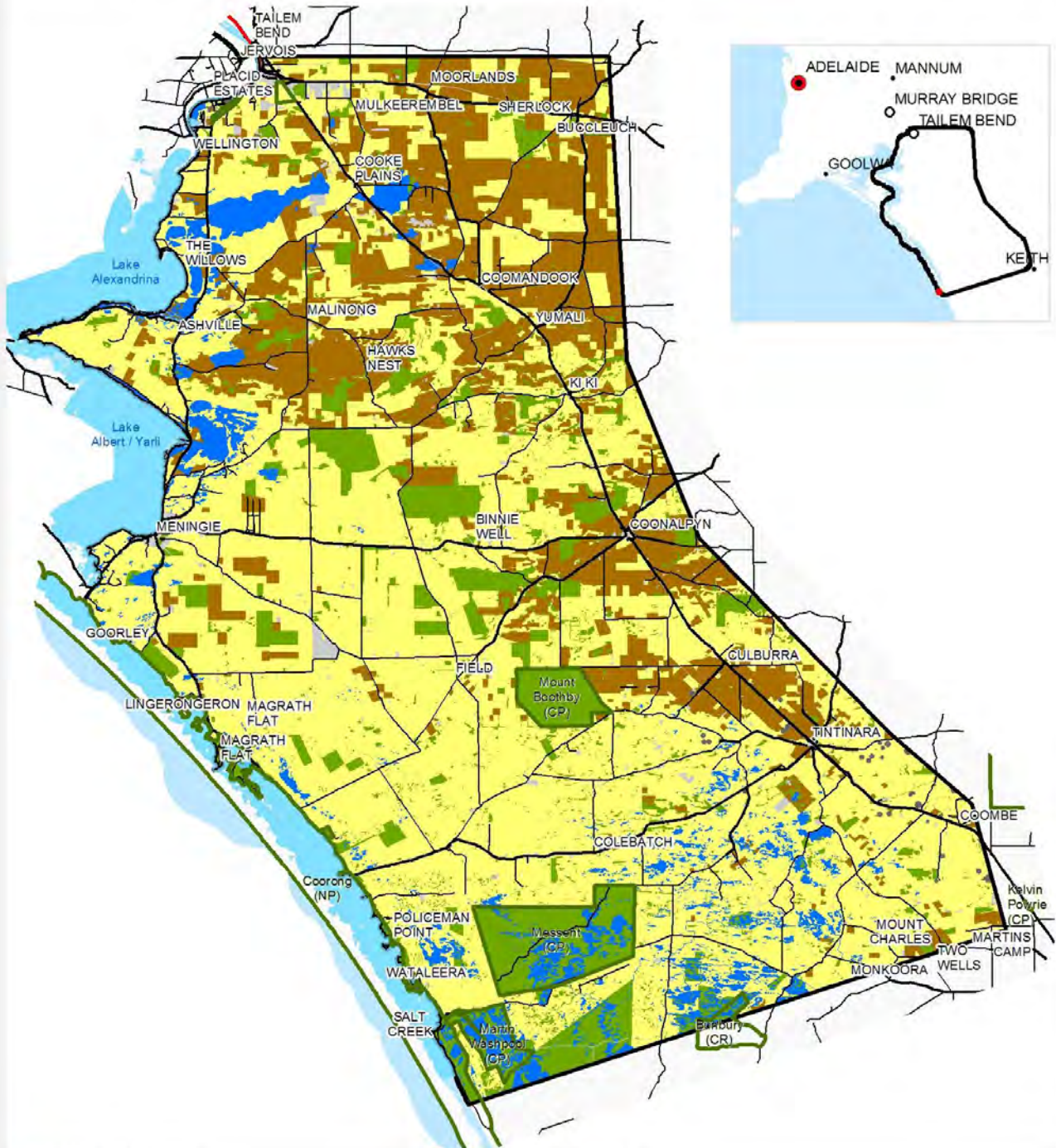


- Class**
- Cropping
 - Grazing
 - Irrigated modified pasture
 - Marsh/wetland
 - Conservation and Natural Resources
 - Unclassified/Not Part of project scope

- Npwsa Reserves
- Area Of Interest
- Highway (divided)
- Sealed
- Unsealed



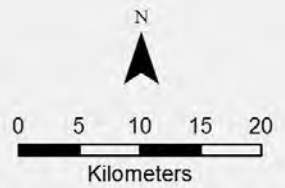
Land Use 2014



Land Use 2014 Class

- Cropping
- Grazing
- Irrigated modified pasture
- Marsh/wetland
- Conservation and Natural Resources
- Unclassified/Not Part of project scope

- Npwsa Reserves
- Area Of Interest
- Highway (divided)
- Sealed
- Unsealed



Land Use 2003

	Hectares	% of Area
Cropping	70,631	13.2
Grazing	357,829	66.9
Irrigated modified pasture	3,109	0.6
Marsh/wetland	31,186	5.8
Conservation and Natural Resources	59,291	11.1
Unclassified/Not Part of project scope	12,922	2.4

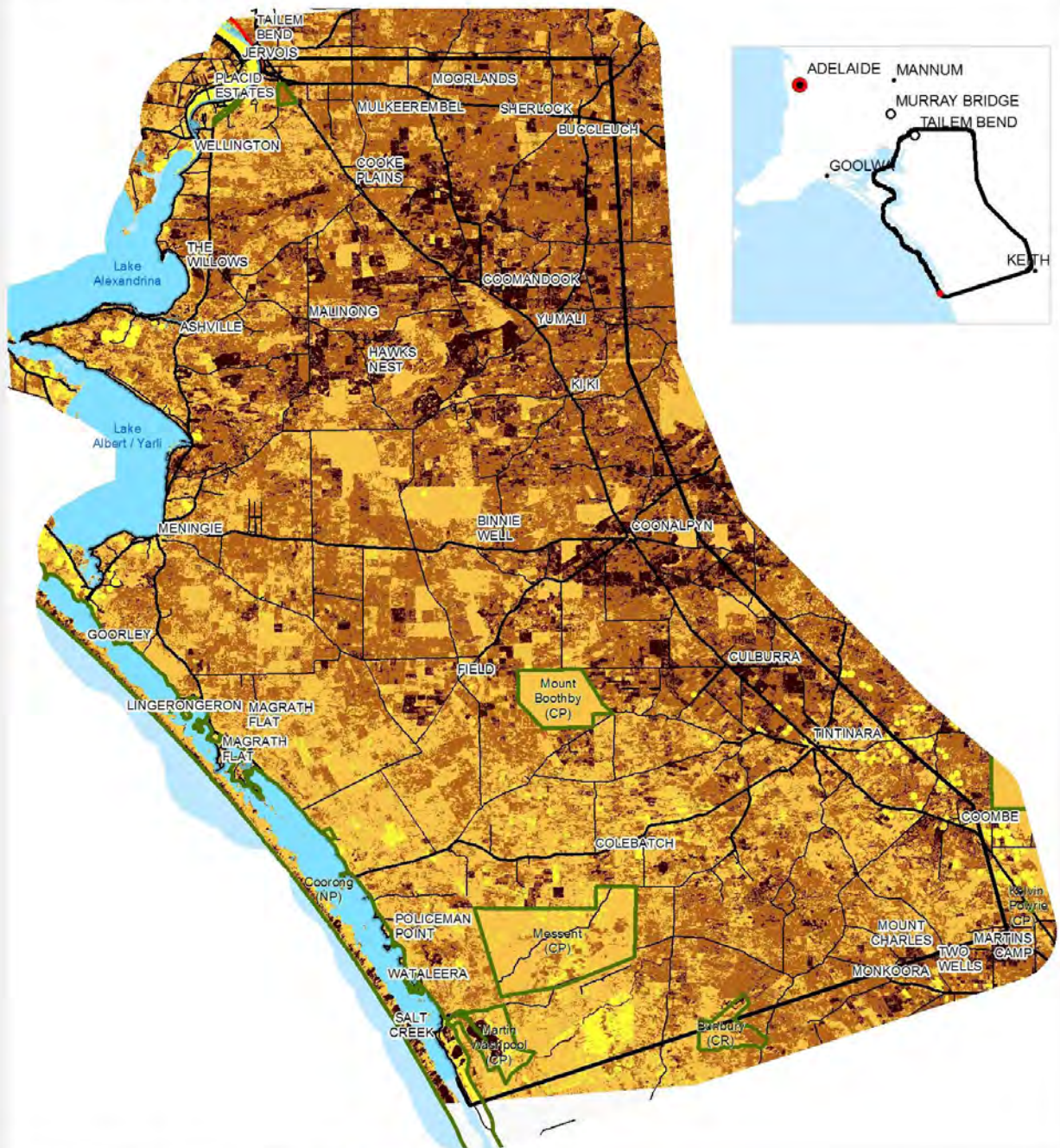
Land Use 2008

	Hectares	% of Area
Cropping	101,966	19.1
Grazing	322,968	60.4
Irrigated modified pasture	3,626	0.7
Marsh/wetland	30,512	5.7
Conservation and Natural Resources	63,619	11.9
Unclassified/Not Part of project scope	12,279	2.3

Land Use 2014

	Hectares	% of Area
Cropping	107,171	20.0
Grazing	318,526	59.5
Irrigated modified pasture	744	0.1
Marsh/wetland	29,441	5.5
Conservation and Natural Resources	63,669	11.9
Unclassified/Not Part of project scope	15,418	2.9

Summer 2003 - Fractional Vegetation Cover

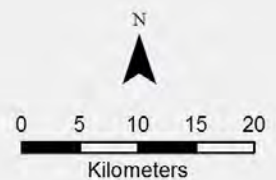


Summer 2003 - Fractional Cover

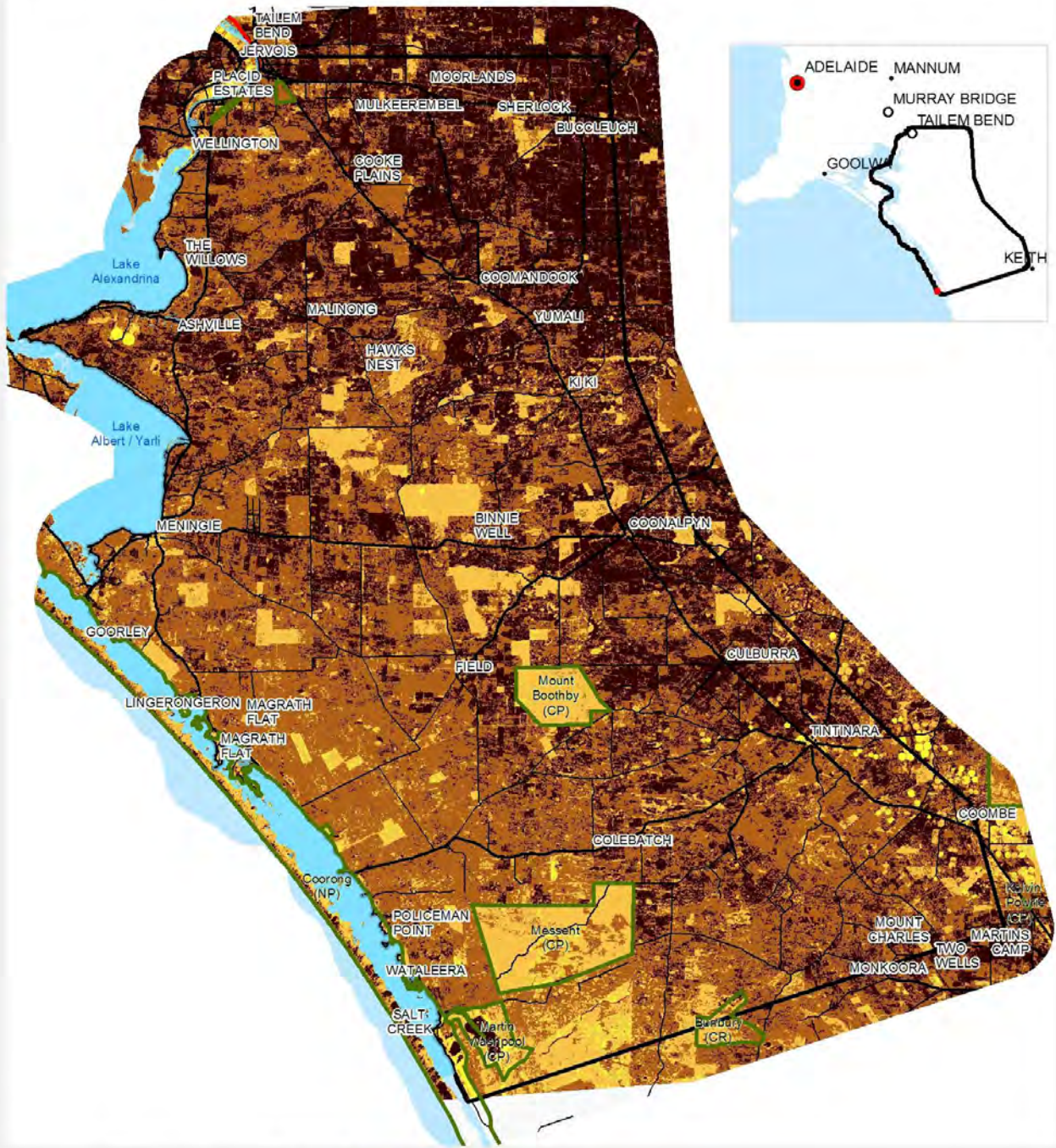
% Cover

- Very Low 0 - 5%
- Low 5 - 25%
- Medium 25 - 50%
- High 50- 100 %

- Npwsa Reserves
- Area Of Interest
- Highway (divided)
- Sealed
- Unsealed



Summer 2008 - Fractional Vegetation Cover

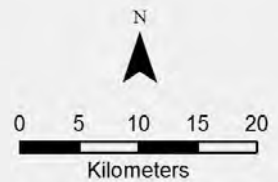


Summer 2008 - Fractional Cover

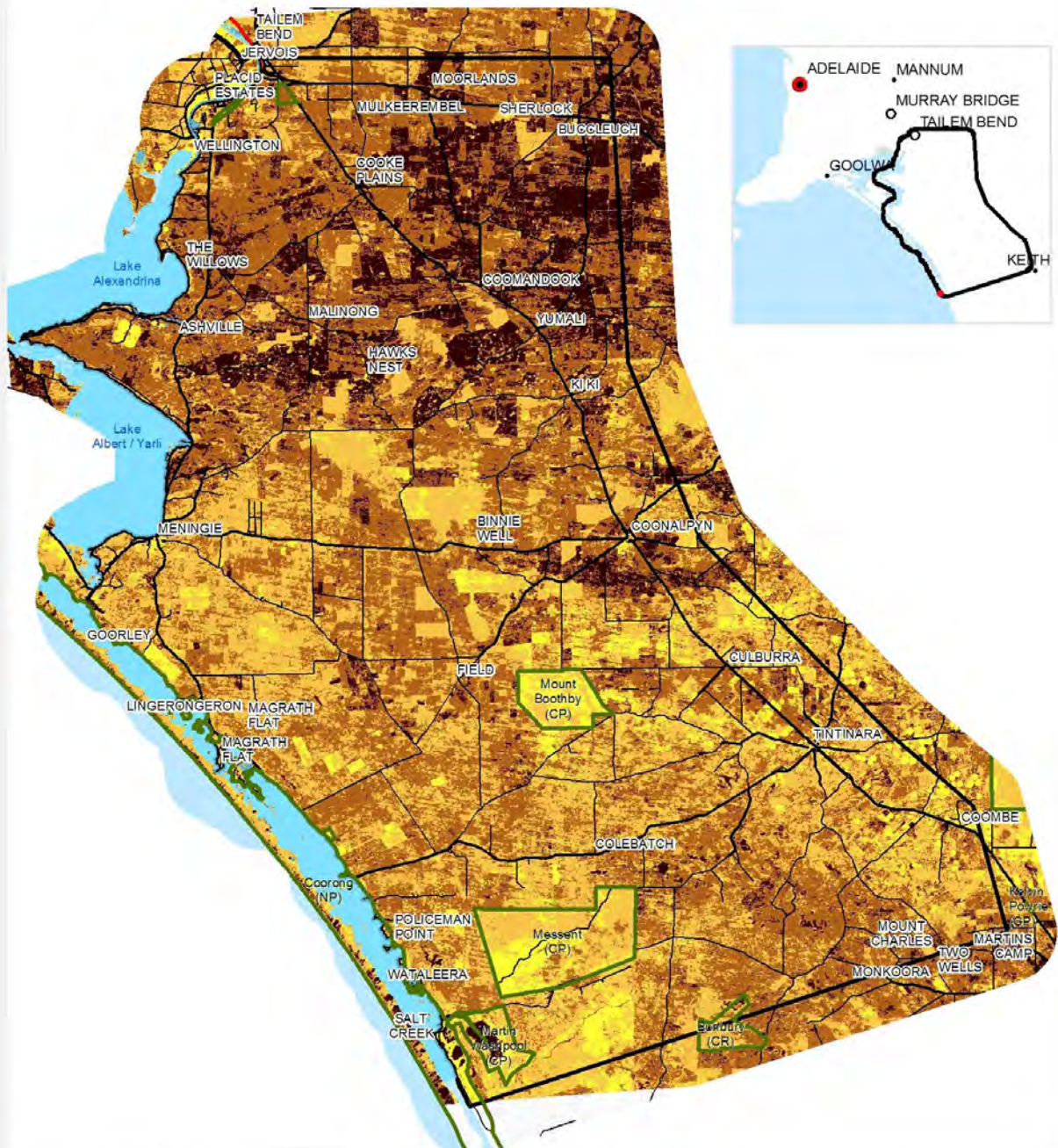
% Cover

- Very Low 0 - 5%
- Low 5 - 25%
- Medium 25 - 50%
- High 50- 100 %

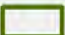




- Npwsa Reserves
- Area Of Interest
- Highway (divided)
- Sealed
- Unsealed




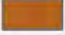


Summer 2014 - Fractional Vegetation Cover



Summer 2014 - Fractional Cover

 Npswa Reserves
 Area Of Interest
 Highway (divided)
 Sealed
 Unsealed

% Cover

 Very Low 0 - 5%
 Low 5 - 25%
 Medium 25 - 50%
 High 50- 100 %

