

# Mallee Sustainable Farming – Salinity project update



By Kylie Matthewson - Extension Officer

Supported by – Chris McDonough (Project support)






# MSF projects

- Sandy Soil Constraint mapping and extension
- Optimising soil amelioration in typical Mallee soils
- Robust ground cover
- SA Drought Hub zoning and VR trial
- NEW- GRDC National Risk Management Initiative





- 
- More land degrading into bare scalds

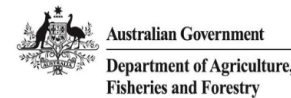
Building resilience to drought with  
landscape scale remediation of saline land

# Project partners and funding by

---

- Project supported by many sub-contractors
  - Help increase the number of land managers trialing and adopting drought-resilient land management practices
  - Through project activities and providing case studies and evidence of positive outcomes.
- 

## Building resilience to drought with landscape scale remediation of saline land project partners



TRENGOVE  
CONSULTING



AG CONSULTING  
AND RESEARCH



This project received funding from the Australian Government's Future Drought Fund.

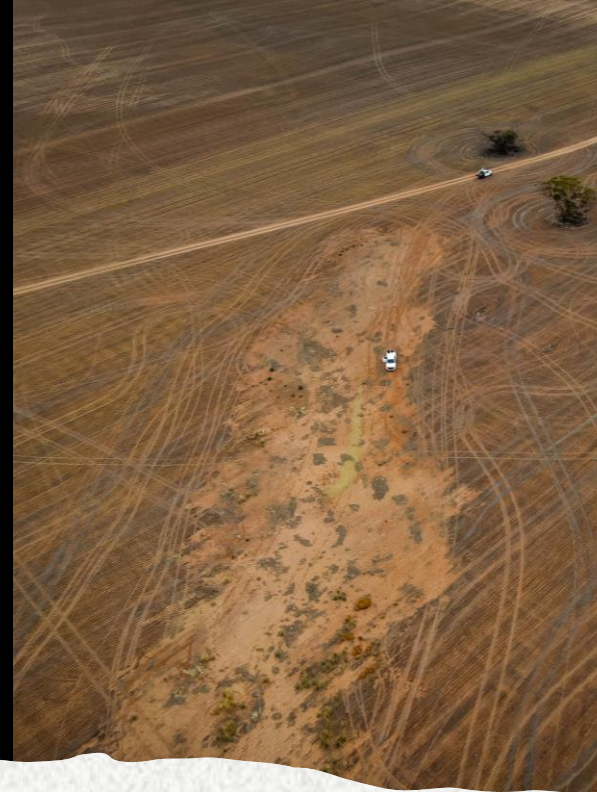




Bare stone patches



"Magnesia" bare patches on heavier ground

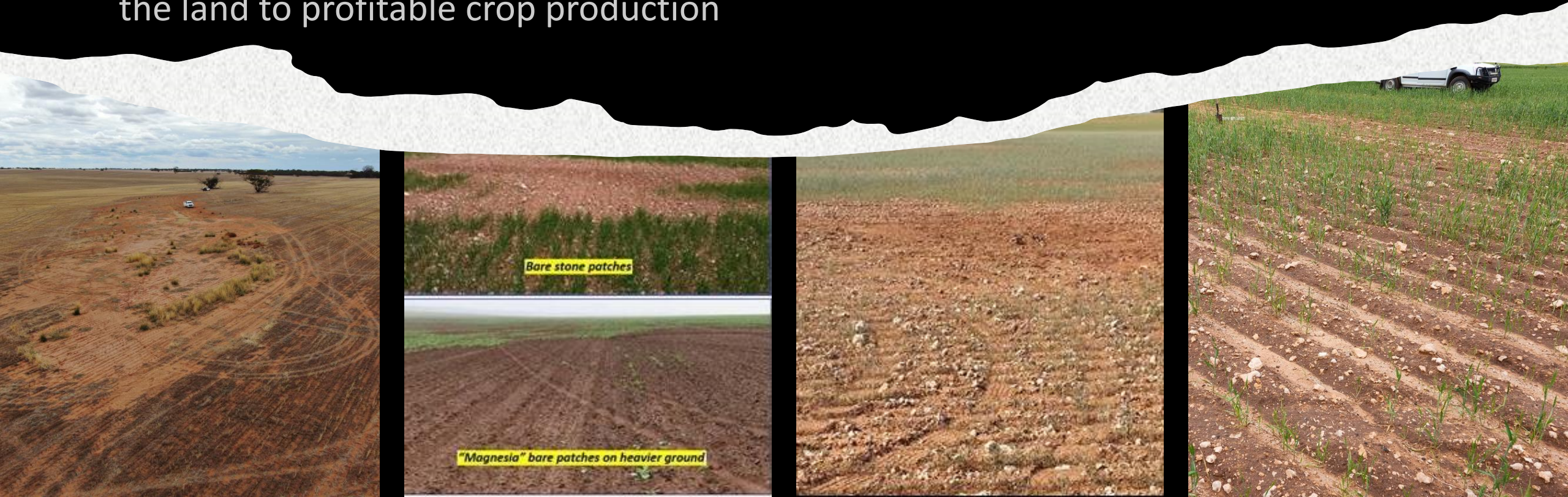


Project demonstrations and deliveries



# Key outcomes:

- Farmers will be supported to identify the difference between dry saline land and Mallee seeps
- Resources will be available to help support a wider adaption of saline land management
- A large number of farmers will be actively managing saline land, helping return the land to profitable crop production



Thank you  
for your support

Any questions for Chris or Kylie

