

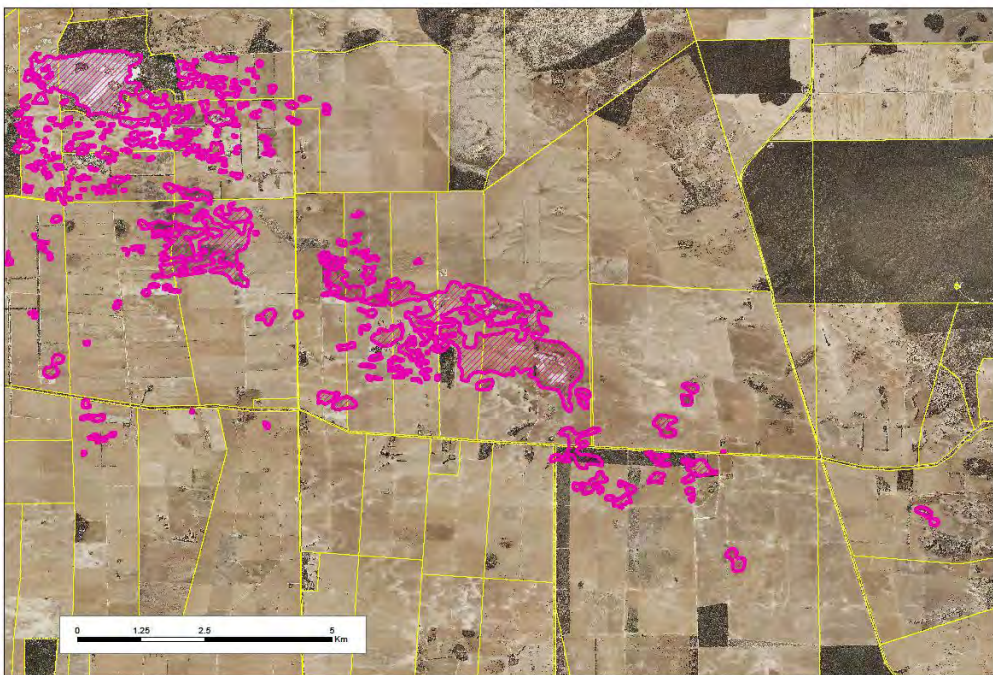
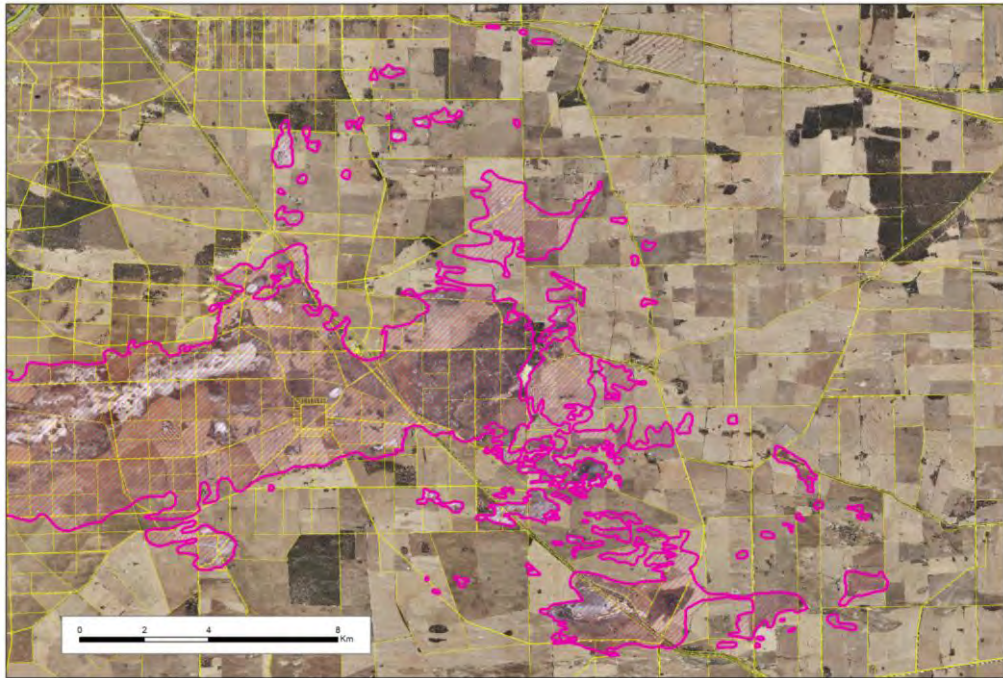
Salinity Risk Mapping

**Steve Barnett – Principal Hydrogeologist
Department for Environment and Water**

These Dryland Salinity Risk Maps were provided by Steve Barnett – Principal Hydrogeologist, Department for Environment and Water in October 2018.

They show areas that have already been salinised together with those areas at risk of salinisation in the future. These areas constitute the lowest topography in the region and were defined using a digital elevation model, depth to watertable information and satellite imagery. Local landholders were consulted to ensure any new areas of salinity were picked up on this new version of the salinity risk mapping.

Coomandook / Cooke Plains Salinity



Meningie East Salinity