

KERBSIDE COLLECTION CALENDAR 2022-2023



JULY 2022

M	T	W	T	F	S	S
				1	2	3
4	5	6	7	8	9	10
11	12	13	14	15	16	17
18	19	20	21	22	23	24
25	26	27	28	29	30	31

AUGUST 2022

M	T	W	T	F	S	S
1	2	3	4	5	6	7
8	9	10	11	12	13	14
15	16	17	18	19	20	21
22	23	24	25	26	27	28
29	30	31				

SEPTEMBER 2022

M	T	W	T	F	S	S
			1	2	3	4
5	6	7	8	9	10	11
12	13	14	15	16	17	18
19	20	21	22	23	24	25
26	27	28	29	30		

OCTOBER 2022

M	T	W	T	F	S	S
					1	2
3	4	5	6	7	8	9
10	11	12	13	14	15	16
17	18	19	20	21	22	23
24	25	26	27	28	29	30
31						

NOVEMBER 2022

M	T	W	T	F	S	S
	1	2	3	4	5	6
7	8	9	10	11	12	13
14	15	16	17	18	19	20
21	22	23	24	25	26	27
28	29	30				

DECEMBER 2022

M	T	W	T	F	S	S
			1	2	3	4
5	6	7	8	9	10	11
12	13	14	15	16	17	18
19	20	21	22	23	24	25
26	27	28	29	30	31	

JANUARY 2023

M	T	W	T	F	S	S
						1
2	3	4	5	6	7	8
9	10	11	12	13	14	15
16	17	18	19	20	21	22
23	24	25	26	27	28	29
30	31					

FEBRUARY 2023

M	T	W	T	F	S	S
		1	2	3	4	5
6	7	8	9	10	11	12
13	14	15	16	17	18	19
20	21	22	23	24	25	26
27	28					

MARCH 2023

M	T	W	T	F	S	S
		1	2	3	4	5
6	7	8	9	10	11	12
13	14	15	16	17	18	19
20	21	22	23	24	25	26
27	28	29	30	31		

APRIL 2023

M	T	W	T	F	S	S
					1	2
3	4	5	6	7	8	9
10	11	12	13	14	15	16
17	18	19	20	21	22	23
24	25	26	27	28	29	30

MAY 2023

M	T	W	T	F	S	S
1	2	3	4	5	6	7
8	9	10	11	12	13	14
15	16	17	18	19	20	21
22	23	24	25	26	27	28
29	30	31				

JUNE 2023

M	T	W	T	F	S	S
			1	2	3	4
5	6	7	8	9	10	11
12	13	14	15	16	17	18
19	20	21	22	23	24	25
26	27	28	29	30		

 **Waste Bin** (collected weekly)

 **Green Organics Bin Week**
(collected fortnightly)

 **Yellow Recycling Bin Week**
(collected fortnightly)

 **No Collection Good Friday**
See Section One for details

Info available through
My Local Services app or
www.coorong.sa.gov.au



Bins out by 6am for collection

COLLECTION DAYS

Use the table below to determine your collection day.

YELLOW RECYCLING BIN AND GREEN ORGANICS BIN WEEK

On the front of this brochure is a calendar. Your green organics bin collection week is marked in green and your yellow recycling bin collection week is marked in yellow.

APRIL 2023

M	T	W	T	F	S	S
					1	2
3	4	5	6	7	8	9
10	11	12	13	14	15	16
17	18	19	20	21	22	23
24	25	26	27	28	29	30

- Green organics bin collection (fortnightly)
- Yellow recycling bin collection (fortnightly)
- No bin collection on this day

DELAYED COLLECTION DATES

Bin collections will be delayed on Good Friday. This days is marked on the calendar and the new collection day is listed on the table below.

USUAL COLLECTION DATE

Friday 7 April 2023

EASTER COLLECTION DATE

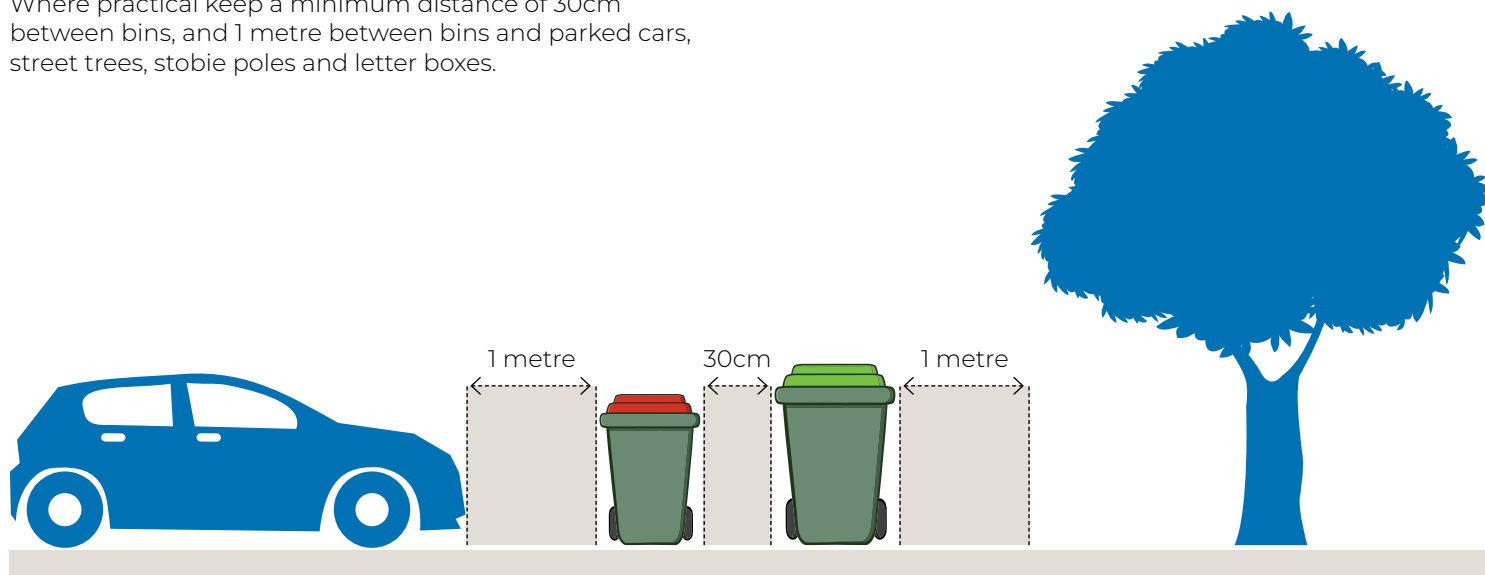
Saturday 8 April 2023

TOWN	COLLECTION DAY RED WASTE BIN	COLLECTION DAY GREEN ORGANICS BIN YELLOW RECYCLING BIN
Buccleuch	Tuesday	Monday
Cooke Plains	Tuesday	Monday
Coomandook	Tuesday	Monday
Coonalpyn	Tuesday	Monday
Culburra	Tuesday	Monday
Jabuk	Tuesday	Monday
Ki Ki	Tuesday	Monday
Meningie	Thursday	Friday
Moorlands	Tuesday	Monday
Murray View Estate	Wednesday	Friday
Narrung	Wednesday	Thursday
Noonameena	Thursday	Friday

TOWN	COLLECTION DAY RED WASTE BIN	COLLECTION DAY GREEN ORGANICS BIN YELLOW RECYCLING BIN
Peake	Tuesday	Monday
Placid Estate	Wednesday	Friday
Policemans Point	Thursday	Friday
Raukkan	Wednesday	Thursday
Salt Creek	Thursday	Friday
Sherlock	Tuesday	Monday
Tailem Bend	Wednesday	Monday
Tintinara	Tuesday	Monday
Washpool Estate	Wednesday	Friday
Wellington East	Wednesday	Friday
Woods Well	Thursday	Friday
Yumali	Tuesday	Monday

CORRECT BIN PLACEMENT

Where practical keep a minimum distance of 30cm between bins, and 1 metre between bins and parked cars, street trees, stobie poles and letter boxes.



HOW TO USE THE KERBSIDE COLLECTION SYSTEM

To ensure your bins are emptied on your scheduled collection day you need to:

- Put the bins out by 6am on the day of pick up and bring them back in within 24 hours of collection
- Face each bin towards the road - wheels towards the house
- Keep a minimum of 30cm clear around each bin
- Place the right material in the right bin (See Sections 3-6 for more information)
- Be sure your waste is not packed too tightly (Keep your bin's weight under 50kg)
- Don't overfill your bin and make sure the lid can close

For all kerbside collection enquiries including missed collections, missing/stolen or damaged bins and new services please call 1300 558 409.



CORRECT
Bins 30cm apart, lids closed



WRONG
Bins too close and overfull

RED GENERAL WASTE BIN

YES

Please place these items in your red waste bin.

BANNED

Banned from household bins (may be accepted at Council Facilities).

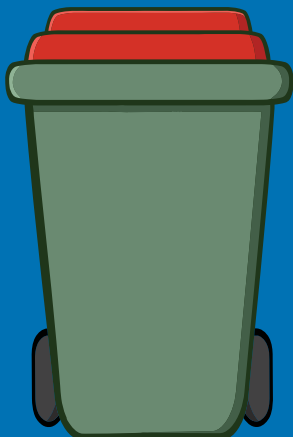
COLLECTED WEEKLY

AVOID AND REDUCE WASTE

- Plan meals so less is wasted
- Buy fruit and veggies loose
- Refuse junk mail if you don't read it
- Read online not in print
- Borrow or rent items used occasionally such as tools
- Repair clothing / appliances

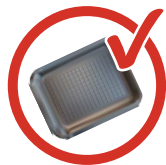
CHOOSE TO RE-USE

- BYO drink bottles for water
- Re-usable shopping bags
- Re-usable lunch boxes / wraps
- Re-usable takeaway cups
- Donate clothing, towels and bedding to charity
- Re-use wrapping paper and single-sided print paper
- Use modern cloth nappies



SOFT PLASTICS

Bags, bread bags, magazine/newspaper wraps, food packaging bags, even with a triangular symbol and number. Keep these items out of landfill by dropping them off to a REDcycle bin located at participating supermarkets



SINGLE USE POLYSTYRENE FOAM/STYROFOAM

Including trays, cups, takeaway containers & non-recyclable packaging



OLD CLOTHING & RAGS



SINGLE USE NAPPIES



BROKEN CROCKERY & GLASSWARE



ROPES & HOSES



NO car parts or gas bottles



NO rubble, stones, rocks or bricks



NO cooking or motor oil



NO liquid paint (must be dried)



NO electronic / e-waste (anything with a battery or cord)



NO hot ash

The following items are BANNED from household bins AND not accepted at Council Facilities. For information about where, how and what you can recycle head to WHICHBIN.SA.GOV.AU



NO medicines, sharps or xrays



NO ammunition, flares or explosives



NO chemicals or poisons

YELLOW RECYCLING BIN

YES

Please place these items in your yellow recycling bin.

NO

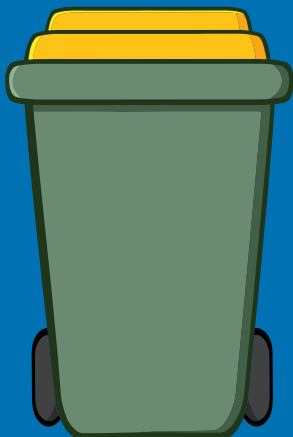
These items do not go in your yellow recycling bin.

COLLECTED FORTNIGHTLY

On the days marked in yellow on your kerbside calendar.

RECYCLING TIPS

- Do not bundle your recyclables - place all items loose in the yellow bin
- Ensure your recyclables are empty and clean
- Place steel lids inside a steel can and squash the top shut to stop lids falling out
- Remove all lids before placing recyclables in the yellow bin
- If you can scrunch a piece of plastic packaging in your hand it is a soft plastic and must be placed in the RED WASTE BIN or recycled through REDcycle bins at participating supermarkets



PAPER & CARDBOARD

Newspaper, magazines, junk mail, envelopes, egg cartons, clean pizza boxes, cardboard boxes



RIGID PLASTIC

Drink bottles, milk and juice bottles, yoghurt, icecream and margarine containers, plastic plant pots, buckets, laundry and bathroom bottles



JUICE & MILK CARTONS



TINS & CANS

Including dry, empty paint tins



ALFOIL WRAPS & TRAYS

Food cleaned off and scrunched into a ball



AEROSOLS

Lids off and empty



GLASS BOTTLES & JARS

Lids off, empty and dry



NO car parts or gas bottles



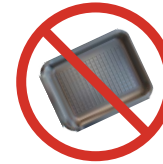
NO clothing or fabric



NO nappies



NO food scraps



NO polystyrene foam trays, cups



NO light globes



NO electronic / e-waste (anything with a battery or cord)



NO SOFT PLASTIC bags, bread bags and newspaper wraps even with a triangular symbol and number. Place in the red waste bin. Keep these items out of landfill by dropping them off to a REDcycle bin located at participating supermarkets



NO garden waste

**HEAD TO
WHICHBIN.SA.GOV.AU**

For information about where, how and what you can recycle.

GREEN ORGANICS BIN

YES

Please place these items in your green organics bin.

NO

These items do not go in your green organics bin.

COLLECTED FORTNIGHTLY

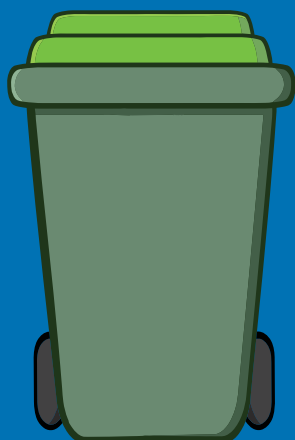
On the days marked in green on your kerbside calendar.



Coorong District Council does not accept food scraps within the green bin. The green bin contents are collected and shredded at Council's Transfer Station, enabling the mulch produced from our green waste bins to be used for capping material on closed landfill cells.

Only garden organics can be shredded and under current licence conditions food scraps cannot be accepted.

For additional information please see Council's website.



LAWN CLIPPINGS & WEEDS



TWIGS & SMALL BRANCHES

No bigger than 10cm thick



LEAVES



SMALL PRUNINGS & CUTTINGS



FLOWERS

GREEN ORGANICS TIPS

- Never put green organics in plastic bags or use bin liners.
- Max weight 70kg, so don't overload with wet grass clippings
- Remember, your garden waste is a valuable resource used to make mulch, so do the right thing

HEAD TO WHICHBIN.SA.GOV.AU

For information about where, how and what you can recycle.



NO rubble, stones, rocks or bricks



NO large logs or stumps



NO hoses or irrigation pipe



NO painted or treated wood



NO soil or sand



NO plant pots



NO gardening tools



NO plastic bags or bin liners. Never put your green organics in plastic bags even if they are degradable or biodegradable



NO food scraps

NEVER IN ANY BIN

Did you know that some things don't belong in any bin?

COMPUTERS AND TELEVISIONS

Council now have TechCollect at its Waste Transfer Stations.

Items that WILL be accepted

- Televisions (analog, LCD, flat screens)
- Computer monitors, towers and laptops
- Printers, scanners, keyboards, mice

Other electronic items may also be accepted at these sites, but may incur a charge.

Drop off locations

- Taillem Bend Waste Transfer Station, Granites Road
- Coonalpyn Waste Transfer Station, Tauragat Well Road
- Tintinara Waste Transfer Station, Kings Road
- Meningie Waste Transfer Station, Yarindale Road

GLOBES, FLUOROS AND HALOGEN LIGHTS

SA householders can simply drop off their end-of life globes at the checkout counter of any Mitre 10, Banner or True Value hardware stores for recycling.

You can drop off a wide range of globes including:

- Compact fluorescent lamps (CFLs)
- Fluorescent tubes
- Incandescent globes
- Halogen lamps, tubes and bulbs

ENGINE OIL

Drain your engine oil and suddenly you've got a few litres of sticky liquid 'black gold' that now seems worthless. The good news is that there are more than 85 places across South Australia where you can take your used oil.

Did you know?

Recycled oil fuels industrial burners, is incorporated into other products, and comes back as hydraulic oil or is re-refined as lubricating oil.

Bring your oil in a clean, plastic container with a lid. The original container is perfect. Avoid using paint cans or other metal containers.

**HEAD TO
WHICHBIN.SA.GOV.AU**

For information about where,
how and what you can recycle.

The following items are banned from any household bin. For information about where, how and what you can recycle head to **WHICHBIN.SA.GOV.AU**



NO liquid paint
(must be dried)



No rubble, stones,
rocks or bricks



NO tyres, car
parts or batteries



NO chemicals or
poisons



NO Medicines,
sharps or xrays



NO cooking or
motor oil



NO gas bottles



NO hot ash



NO ammunition,
flares or explosives



NO electronic /
e-waste (anything
with a battery or
cord)



NO radioactive
materials



NO construction
steel or treated
wood



NO soil or sand

RECYCLE AND WASTE TRANSFER STATIONS

Council Waste Transfer Stations are located in Tailem Bend, Tintinara, Meningie and Coonalpyn.

Waste is separated into green waste, glass, cans, plastics, cardboard, metal and electrical and then sent to the recyclers. Batteries, waste oil, e-waste and chemical containers will also be accepted and disposed of accordingly. Residual waste is transported off site and disposed of at an approved landfill site.

WASTE TRANSFER STATION

OPENING TIMES

Tailem Bend

Granites Road
4km north of Tailem Bend post office

Wednesday and Sunday
10.30am to 3pm

Coonalpyn

Tauragat Well Road
3.5km north-east of Coonalpyn post office

Wednesday and Sunday
11am to 3pm

Tintinara

Kings Road
2.5km south-east of Tintinara post office

Wednesday and Sunday
11am to 3pm

Meningie

Yarindale Road
1km south-east of Meningie post office

Wednesday and Sunday
10.30am to 3pm

ACCEPTED WASTE

- Household waste
- Green organic waste
- Plastic bottles and aluminium cans
- Paper and cardboard
- Scrap metal
- E-Waste
- Oil filters
- Gas cylinders
- Mattresses, lounge furniture
- Tyres (off rim only)
- Batteries
- Domestic quantity construction and demolition material (by appointment only at Tailem Bend)

UNACCEPTABLE WASTE

Commercial quantities and contractor waste are not accepted.

- Paint
- Treated timber (CCA, creosote)
- Asbestos
- Hazardous chemicals

TOWN	GENERAL WASTE	RECYCLING	ELECTRONIC & E-WASTE	SCRAP METAL	GREEN WASTE	DRUM MUSTER*	WASTE OIL	TYRES OFF RIM	CONSTRUCTION & DEMOLITION
Tailem Bend	✓	✓	✓	✓	✓	✓	✓	✓	✓
Coonalpyn	✓	✓	✓	✓	✓	✓	✓	✓	✗
Tintinara	✓	✓	✓	✓	✓	✓	✗	✓	✗
Meningie	✓	✓	✓	✓	✓	✓	✓	✓	✗

✓ Domestic quantities of construction and demolition waste can be received at the Tailem Bend Waste Transfer Station by appointment only. Contact Council on 1300 785 277.

RECYCLING TIP

Residents are also encouraged to deliver their bottles, cans, plastics and cardboard to their local recycling centre and receive the refund of the deposit on cans and bottles. Bottle and can recyclers are situated at:

Murray Bridge Recycling

55 Thomas Street
Murray Bridge
Contact Todd Schultz
Phone 08 8532 4551

Wally's Bottleyard

12-14 Thelda Street
Murray Bridge
Contact James/Michelle
Phone 08 8532 1860

Meningie Bottle & Can

Corner Princes Highway
& Yumali Road
Meningie
Phone 08 8532 4551

HEAD TO WHICHBIN.SA.GOV.AU

For more information about where, how and what you can recycle.

KERBSIDE COLLECTION ENQUIRIES

Call 1300 558 409

COORONG DISTRICT COUNCIL

Call 1300 785 277

council@coorong.sa.gov.au

www.coorong.sa.gov.au

BOTTLE AND CAN RECYCLING

Meningie Bottle & Can 08 8532 4551

Murray Bridge Recycling 08 8532 4551

Wally's Bottleyard Murray Bridge 08 8532 1860

MY LOCAL SERVICES APP



Kerbside collection information is available through the My Local Services app

WHICH BIN HOTLINE

Call 1300 137 118



DON'T KNOW WHICH BIN?

HEAD TO THE WHICH BIN WEBSITE



Government
of South Australia

Green Industries SA