



VITERRA™

COORONG THRIVING TOWNS PROJECT DESIGN & STYLE GUIDE

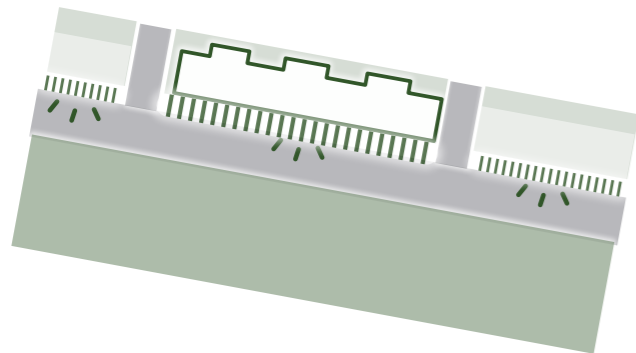
COONALPYN - TINTINARA
70% MASTER PLAN REPORT

- 1. KEY DESIGN STRATEGIES
- 2. STYLE GUIDE - (UNDER DEVELOPMENT)

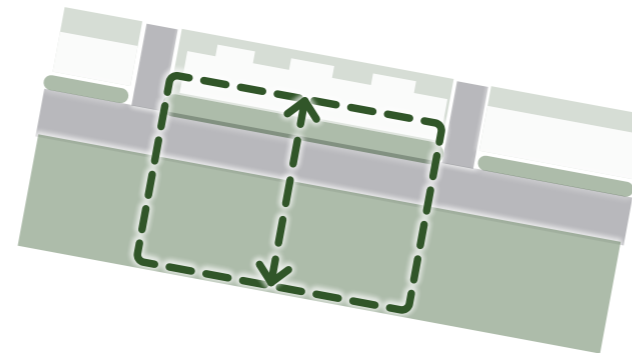
ESTABLISHING FOUR KEY DESIGN STRATEGIES

Based on the preceding **vision** and five **design principles** for Taillem Bend, Coonalpyn and Tintinara, **four key site-wide urban design strategies** have been identified to drive the Coorong streetscapes and accomplish a **successful outcome** for all stakeholders.

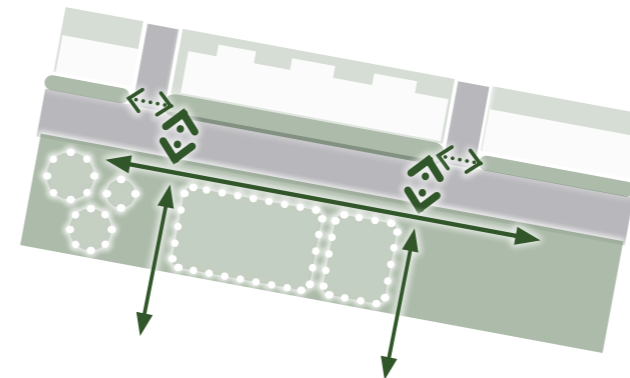
These strategies inform improvements to the main street experience, the civic heart of each township, pedestrian path networks, and prioritise places for people within each precinct.



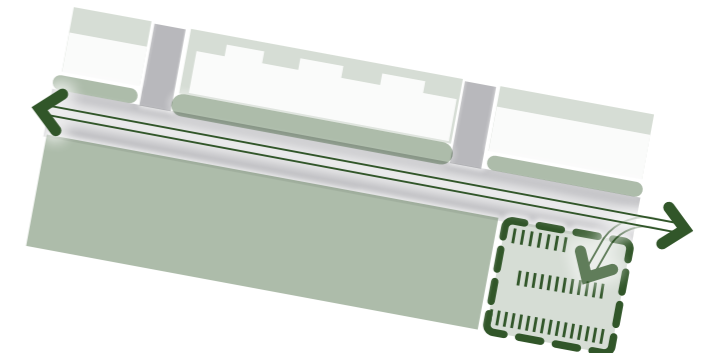
- 1 Create a main street experience** through improved footpaths, verge treatments, pedestrian comfort and accessibility



- 2 Define a civic heart** with high quality green spaces, visitor amenities and play opportunities that integrates the main street experience



- 3 Connect the precinct** through improved pedestrian path networks, dedicated crossing locations and links to key destinations



- 4 Consolidate and maximise efficiency of parking areas** to reduce pedestrian and vehicle conflicts and enable places for people to be prioritised

COONALPYN KEY DESIGN STRATEGIES

- 1 Create a mainstreet experience
- 2 Define a civic heart
- 3 Connect the precinct
- 4 Consolidate and maximise efficiency of parking areas

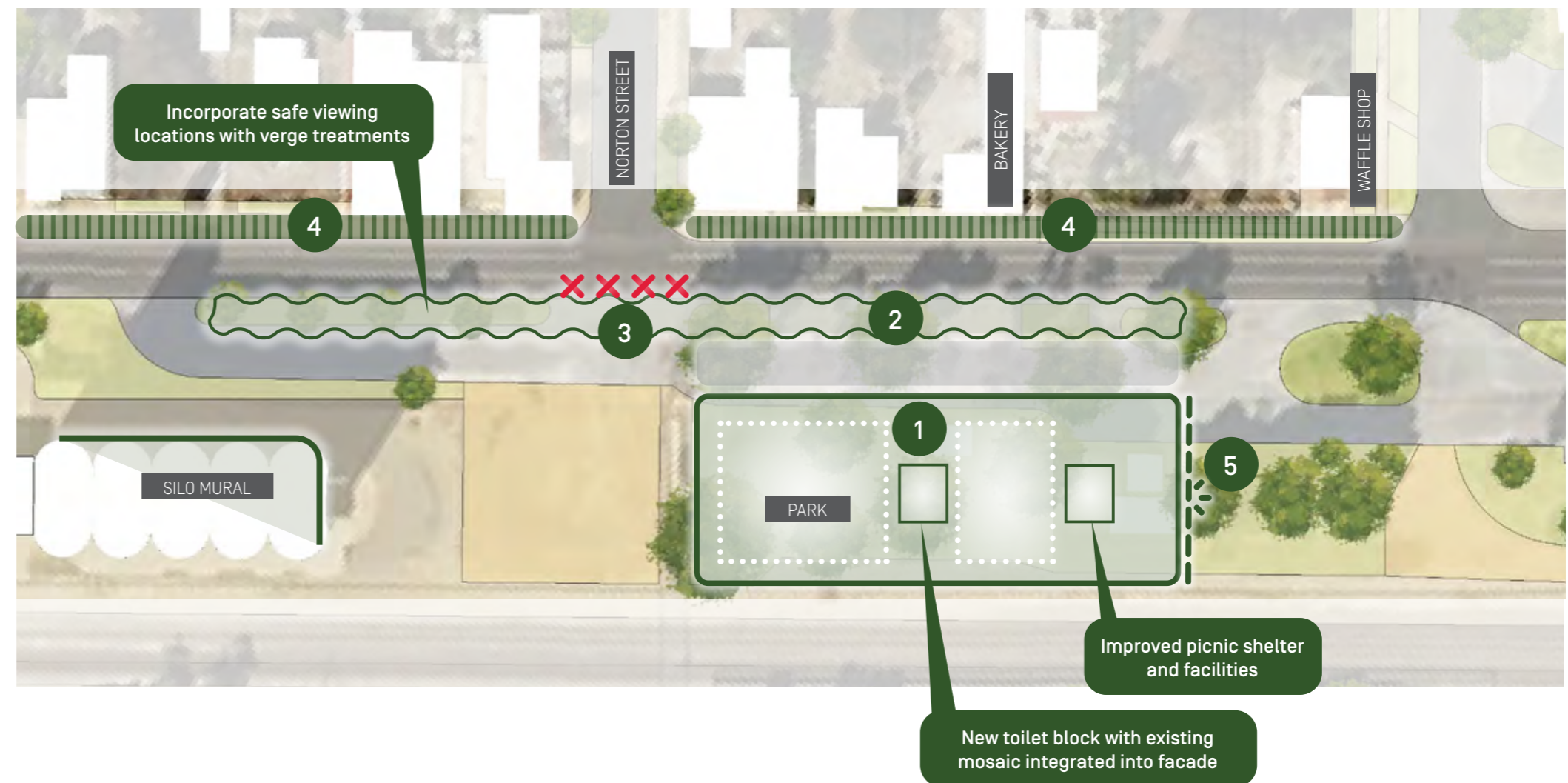


COONALPYN

IMPROVING THE EXISTING CONDITIONS

Summary of Key Design Strategies:

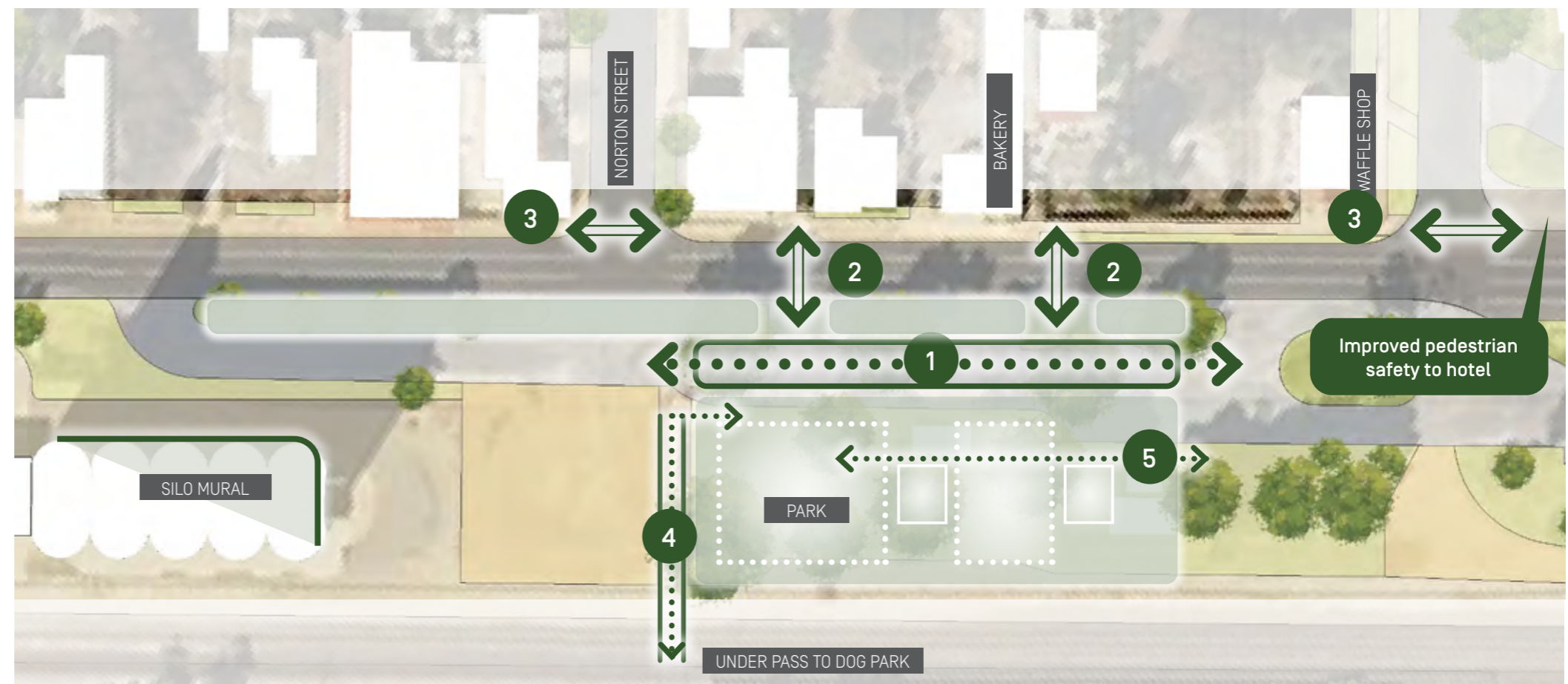
1. New upgraded and reconfigured rest area with shelter, amenities, playspace and fenced dog park
2. Remove car parking and re-vegetate (planting or lawn) under existing verge trees to provide a green edge to the 'civic' precinct
3. Remove car park entry point opposite Norton Street to remove potential conflict - provide continuous, landscaped verge treatment
4. Enhance footpath surface treatments along shop fronts to create a 'high street' experience
5. Improved presentation of park entry at the interface with car parking area



COONALPYN CONNECTING THE TWO SIDES OF THE HIGHWAY

Summary of Key Design Strategies:

1. Create a pedestrian priority shared space that allows safe vehicle movements through.
2. Provide formalised pedestrian crossing points and/or safe refuges at Dukes Hwy edge
3. Improve pedestrian infrastructure at intersections with new protuberances and kerb ramps.
4. Refurbished rail underpass with public art opportunity (including new balustrade)
5. Improved accessible path network within the park



COONALPYN

IMPROVING VEHICLE MOVEMENTS AND PARKING

Summary of Key Design Strategies:

1. Consolidate and formalise car parking to address parking inefficiency.
2. Opportunity for large vehicle parking and manoeuvring.
3. Simplify and improve vehicle entry and exit locations
4. Remove parking directly in front of Silo Mural to improve visibility
5. Undertake traffic movement study to improve vehicle movements in and throughout the precinct



COONALPYN BEST PRACTICE EXAMPLES



Legibility of edge treatments to delineate both pedestrian and vehicular traffic



Appropriate surface treatments



High quality urban furniture



Appealing green space



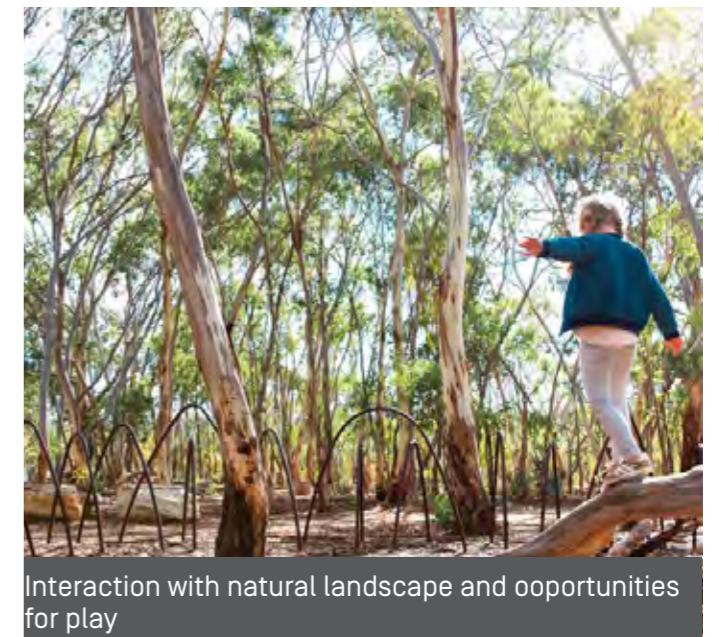
Unique offerings



Comfortable layover areas that celebrate the region as an attractive destination



Unique stop over facilities



Interaction with natural landscape and opportunities for play

TINTINARA KEY DESIGN STRATEGIES

- 1 Create a main street experience
- 2 Define a civic heart
- 3 Connect the precinct
- 4 Consolidate and maximise efficiency of parking areas



TINTINARA

IMPROVING THE CIVIC HEART

Summary of the key design strategies:

1. Establish a new 'civic' precinct that highlights the core for facilities, services and amenities including:
2. New upgraded and consolidated rest area with shelter, amenities, playspace and fenced dog park.
3. 'Heart of the Park' and Tintinara RSL Memorial Walking Trails information.
4. Streetscape improvements to Becker Terrace including new street trees and verge planting.
5. Planted median to highlight the civic heart.



TINTINARA PEDESTRIAN AND VEHICLE MOVEMENTS

Summary of the key design strategies:

1. Remove driveway crossovers and provide a consistent and formalised verge treatment
2. Consolidate car parking with the RV parking & dump point and provide new access off Dukes Highway
3. Integrate Old Railway Station and platform with rationalised parking to pedestrianise the area
4. Undertake traffic movement study to improve vehicle movements in and throughout the precinct
5. Remove rest bay, consolidate parking areas to within the Heart of the Parks precinct

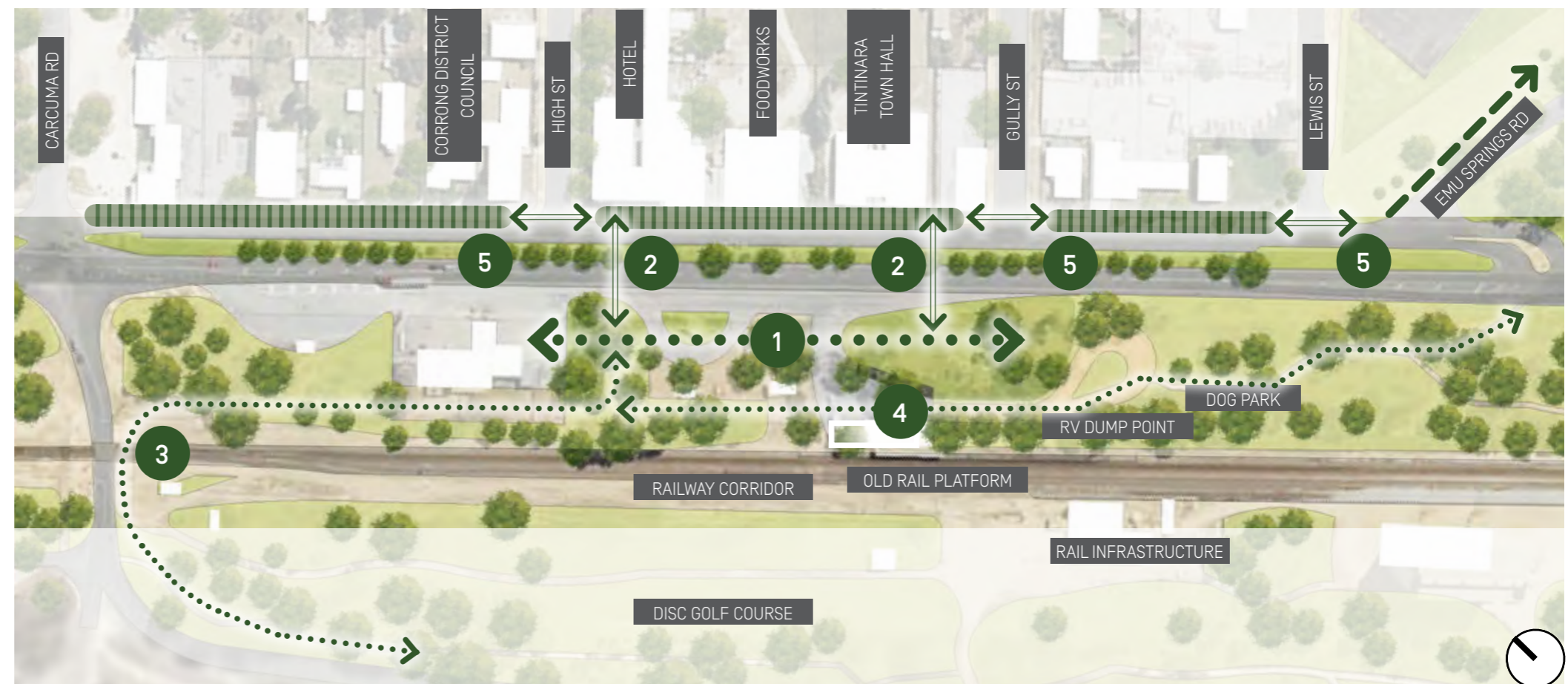


TINTINARA

LINKING A WALKABLE TOWN

Summary of the key design strategies:

1. Pedestrian connectivity through the core and between car parking and Shell.
2. Improved pedestrian crossings to access Becker Terrace.
3. Provide a formal connection to and from proposed new ARTC rail crossing and link with pedestrian crossing over Dukes Hwy and Becker Tce.
4. Highlight and formalise connectivity to the Tintinara RSL Memorial Walking Trails
5. Improved pedestrian connectivity along Becker Tce.



TINTINARA BEST PRACTICE EXAMPLES



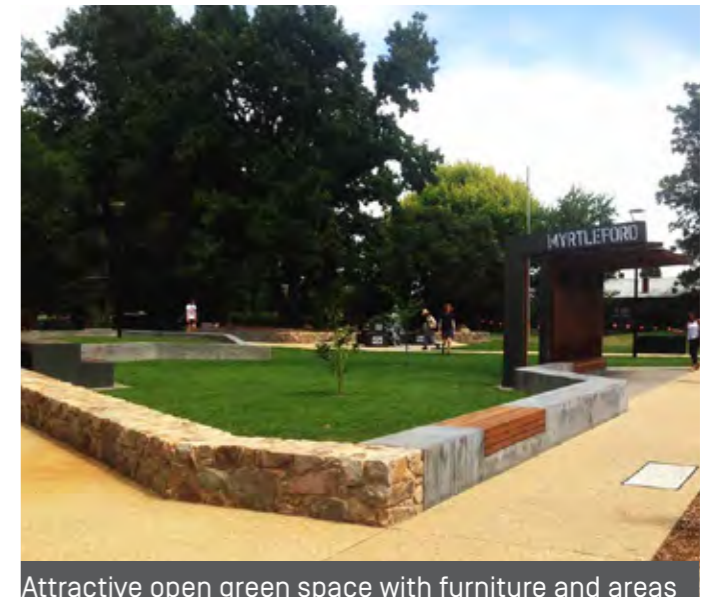
Improve pedestrian amenities, comfort and lighting



Improve becker tce through creating a pedestrian friendly environment, reducing traffic related risks



Appealing destinations for all ages within the park lands



Attractive open green space with furniture and areas of maintained turf and natural shade



Natural materials and native planting



Attractive furniture and robust planting



Street trees to provide shade to paved areas



Attractive spaces to activate shop frontages